

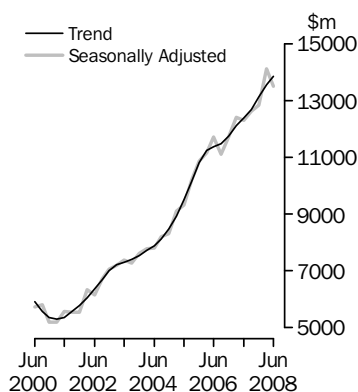
ENGINEERING CONSTRUCTION ACTIVITY

AUSTRALIA

EMBARGO: 11.30AM (CANBERRA TIME) TUES 30 SEP 2008

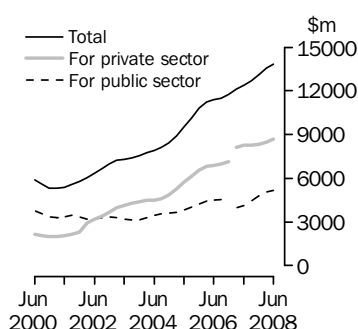
Value of work done

Chain volume measures



Value of work done

Chain volume measures
Trend estimates



Break in series between Dec 06 and Mar 07.

INQUIRIES

For further information about these and related statistics, contact the National Information and Referral Service on 1300 135 070 or Willie Hynd on Adelaide (08) 8237 7646.

KEY FIGURES

	Jun qtr 08	Mar qtr 08 to Jun qtr 08	Jun qtr 07 to Jun qtr 08
	\$m	% change	% change
TREND ESTIMATES (a)			
Value of work done			
For the private sector	8 672.7	2.1	5.1
For the public sector(b)	5 153.6	1.6	24.3
Total engineering construction	13 840.6	2.1	11.7

SEASONALLY ADJUSTED ESTIMATES (a)

Value of work done			
For the private sector	8 594.3	-1.5	2.0
For the public sector(b)	4 900.4	-9.3	26.1
Total engineering construction	13 494.7	-4.5	9.6

(a) Chain volume measures, reference year 2005-06.

(b) Includes work done by the private sector for the public sector and work done by the public sector.

KEY POINTS

VALUE OF WORK DONE, CHAIN VOLUME MEASURES

TOTAL

- The trend estimate for the value of total engineering construction work done rose by 2.1% in the June 2008 quarter.
- The seasonally adjusted estimate for the value of total engineering construction work done fell 4.5%, to \$13,494.7m, in the June quarter.

PRIVATE SECTOR

- The trend estimate for the value of work done for the private sector rose by 2.1% in the June quarter.
- The seasonally adjusted estimate for the value of work done for the private sector fell 1.5% in the June quarter to \$8,594.3m.

PUBLIC SECTOR

- The trend estimate for the value of work done for the public sector rose by 1.6% in the June quarter.
- The seasonally adjusted estimate for the value of work done for the public sector fell 9.3%, to \$4,900.4m, in the June quarter.

VALUE OF WORK COMMENCED

- The value of work commenced in the June quarter was \$18,145.2m, a fall of 4.9% from the March 2008 quarter.

NOTES

FORTHCOMING ISSUES

ISSUE (Quarter)

RELEASE DATE

September 2008

14 January 2009

December 2008

6 April 2009

.....

ABOUT THIS ISSUE

This publication updates the preliminary estimates released in Construction Work Done, Australia (cat. no. 8755.0) on 27 August 2008.

CHANGES IN THIS ISSUE

There are no changes in this issue.

SIGNIFICANT REVISIONS THIS QUARTER

There are no significant revisions in this issue.

.....

ABBREVIATIONS

\$m	million dollars
ABN	Australian Business Number
ABS	Australian Bureau of Statistics
ACT	Australian Capital Territory
ANZSIC	Australian and New Zealand Standard Industrial Classification
ATO	Australian Taxation Office
Aust.	Australia
ECS	Engineering Construction Survey
NSW	New South Wales
NT	Northern Territory
qtr	quarter
Qld	Queensland
RSE	relative standard error
SA	South Australia
Tas.	Tasmania
TAU	type of activity unit
Vic.	Victoria
WA	Western Australia

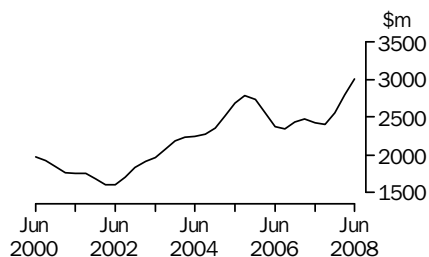
Susan Linacre

Acting Australian Statistician

VALUE OF WORK DONE STATES AND TERRITORIES

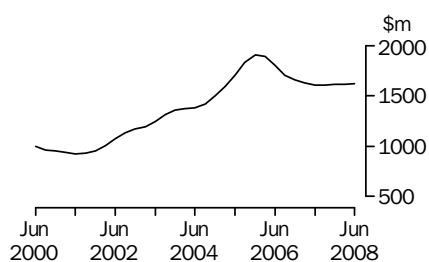
CHAIN VOLUME MEASURES—TREND ESTIMATES

NEW SOUTH WALES



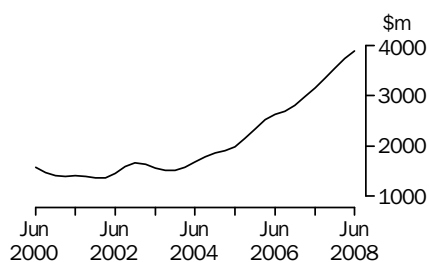
The trend estimate for the value of work done rose 7.5% in the June quarter and has risen for three quarters.

VICTORIA



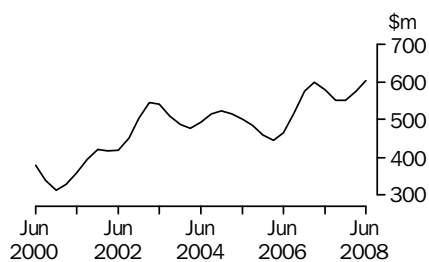
The trend estimate of the value of work done rose 0.1% in the June quarter and is now showing rises for four quarters.

QUEENSLAND



The trend estimate for the value of work done rose 4.1% in the June quarter, continuing the period of strong growth since December 2003 quarter.

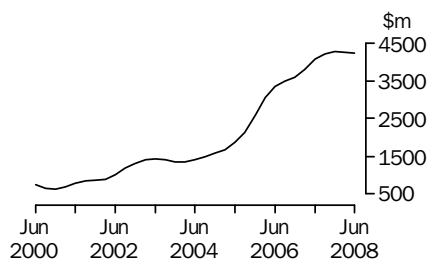
SOUTH AUSTRALIA



The trend estimate for the value of work done rose 5.0% in the June quarter and has risen for two quarters.

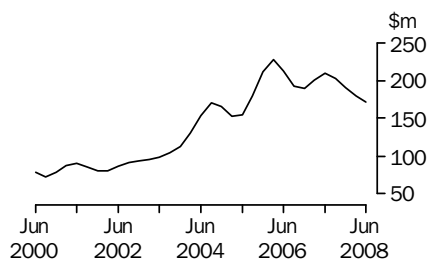
VALUE OF WORK DONE STATES AND TERRITORIES *continued*

WESTERN AUSTRALIA



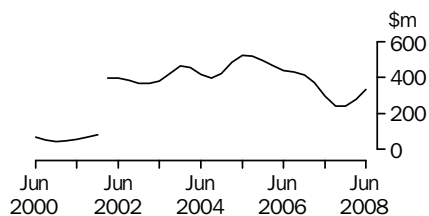
The trend estimate for the value of work done fell 0.7% in the June quarter and is now showing falls for two quarters which follows 15 quarters of growth.

TASMANIA



The trend estimate for the value of work done fell 4.6% in the June quarter, and has fallen for four quarters.

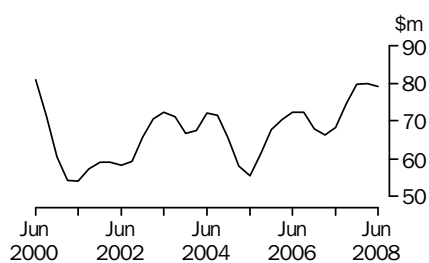
NORTHERN TERRITORY



Break in trend series from March 2002

The trend estimate for the value of work done rose 19.8% in the June quarter and is now showing two quarters of growth.

AUSTRALIAN CAPITAL TERRITORY



The trend estimate for the value of work done fell 1.1% in the June quarter following rises for four quarters.

LIST OF TABLES

page

TABLES

1	Value of work done, chain volume measures	6
2	Value of work done, chain volume measures, change from previous period	7
3	Value of work done, states and territories, chain volume measures	8
4	Value of work done, states and territories, chain volume measures, change from previous period	9
5	Value of work done	10
6	Value of work done, change from previous period	11
7	Value of work done, states and territories	12
8	Value of work done, states and territories, change from previous period	13
9	Activity, states and territories, original	14
10	Activity, states and territories, change from previous period, original	15
11	Activity, by type, original	16
12	Work commenced by the private sector, by type, original	18
13	Work done by the private sector, by type, original	20
14	Work yet to be done by the private sector, by type, original	22
15	Activity by the public sector, by type, original	24
16	Activity for the public sector, by type, original	26
17	Activity, by type, New South Wales, original	28
18	Activity, by type, Victoria, original	29
19	Activity, by type, Queensland, original	30
20	Activity, by type, South Australia, original	31
21	Activity, by type, Western Australia, original	32
22	Activity, by type, Tasmania, original	33
23	Activity, by type, Northern Territory, original	34
24	Activity, by type, Australian Capital Territory, original	35
25	Value of work done by the private sector, states and territories, original	36
26	Value of work done by the public sector, states and territories, original	37
27	Value of work done for the public sector, states and territories, original	38
28	Relative standard errors, Australia, by sector	39
29	Relative standard errors, states and territories, by type of work	40

VALUE OF WORK DONE, Chain volume measures(a)

BY THE PRIVATE SECTOR

<i>Period</i>	<i>For the private sector</i>	<i>For the public sector</i>	<i>Total</i>	<i>By the public sector</i>	<i>Total for the public sector(b)</i>	<i>Total</i>
	\$m	\$m	\$m	\$m	\$m	\$m
ORIGINAL						
2005-06	26 651.8	6 480.4	33 132.1	10 793.7	17 274.1	43 925.9
2006-07	30 495.5	6 816.4	37 311.9	10 226.5	17 042.9	47 538.5
2007-08	33 568.3	9 583.3	43 151.6	9 658.8	19 242.1	52 810.4
2007						
March	7 578.4	1 857.4	9 435.8	2 301.3	4 158.7	11 737.1
June	8 698.3	1 884.5	10 582.8	2 573.6	4 458.1	13 156.4
September	7 951.8	2 070.2	10 022.0	1 970.0	4 040.1	11 991.9
December	8 401.4	2 362.1	10 763.5	2 277.3	4 639.4	13 040.8
2008						
March	8 240.2	2 510.8	10 751.0	2 565.3	5 076.1	13 316.3
June	8 974.9	2 640.2	11 615.2	2 846.2	5 486.4	14 461.4

SEASONALLY ADJUSTED

2007						
March	8 088.8	1 888.5	9 977.3	2 434.3	4 322.8	12 411.5
June	8 428.0	1 786.3	10 214.3	2 098.3	3 884.6	12 312.6
September	8 193.6	2 167.8	10 361.4	2 275.3	4 443.2	12 636.7
December	8 125.5	2 345.4	10 470.9	2 366.0	4 711.3	12 836.9
2008						
March	8 722.6	2 604.1	11 326.7	2 801.4	5 405.5	14 128.1
June	8 594.3	2 499.4	11 093.8	2 400.9	4 900.4	13 494.7

TREND

2007						
March	(c) 8 130.9	1 755.4	(c) 9 880.7	(c) 2 242.0	(c) 3 977.3	12 128.6
June	8 252.4	1 914.6	10 166.5	2 229.8	4 144.8	12 396.3
September	8 258.1	2 132.0	10 391.3	2 289.1	4 425.1	12 678.9
December	8 336.2	2 349.9	10 684.7	2 437.7	4 787.0	13 121.3
2008						
March	8 491.3	2 510.6	11 001.2	2 561.2	5 071.4	13 561.5
June	8 672.7	2 573.0	11 254.4	2 575.2	5 153.6	13 840.6

- (a) Reference year for chain volume measures is 2005-06. See paragraphs 24-27 of the Explanatory Notes.
- (b) Includes work done by the private sector for the public sector and work done by the public sector.
- (c) Break in series between December 2006 and March 2007.

VALUE OF WORK DONE, Chain volume measures(a)—Change from previous period

BY THE PRIVATE SECTOR

<i>Period</i>	<i>For the private sector</i>	<i>For the public sector</i>	<i>Total</i>	<i>By the public sector</i>	<i>Total for the public sector(b)</i>	<i>Total</i>
	%	%	%	%	%	%

ORIGINAL

2005–06	31.5	8.4	26.2	24.1	17.7	25.7
2006–07	14.4	5.2	12.6	–5.3	–1.3	8.2
2007–08	10.1	40.6	15.7	–5.6	12.9	11.1
2007						
March	0.7	16.7	3.5	–20.4	–7.3	–2.3
June	14.8	1.5	12.2	11.8	7.2	12.1
September	–8.6	9.9	–5.3	–23.5	–9.4	–8.9
December	5.7	14.1	7.4	15.6	14.8	8.7
2008						
March	–1.9	6.3	–0.1	12.6	9.4	2.1
June	8.9	5.2	8.0	11.0	8.1	8.6

SEASONALLY ADJUSTED

2007						
March	12.3	19.3	13.5	–16.6	–4.0	6.0
June	4.2	–5.4	2.4	–13.8	–10.1	–0.8
September	–2.8	21.4	1.4	8.4	14.4	2.6
December	–0.8	8.2	1.1	4.0	6.0	1.6
2008						
March	7.3	11.0	8.2	18.4	14.7	10.1
June	–1.5	–4.0	–2.1	–14.3	–9.3	–4.5

TREND

2007						
March	(c) np	7.2	(c) np	(c) np	(c) np	3.2
June	1.5	9.1	2.9	–0.5	4.2	2.2
September	0.1	11.4	2.2	2.7	6.8	2.3
December	0.9	10.2	2.8	6.5	8.2	3.5
2008						
March	1.9	6.8	3.0	5.1	5.9	3.4
June	2.1	2.5	2.3	0.5	1.6	2.1

np not available for publication but included in totals where applicable, unless otherwise indicated

(a) Reference year for chain volume measures is 2005–06. See paragraphs 24–27 of the Explanatory Notes.

(b) Includes work done by the private sector for the public sector and work done by the public sector.

(c) Break in series between December 2006 and March 2007.

VALUE OF WORK DONE, States and territories—Chain volume measures(a)

	NSW	Vic.	Qld	SA	WA	Tas.	NT	ACT	Aust.
<i>Period</i>	\$m	\$m	\$m	\$m	\$m	\$m	\$m	\$m	\$m
ORIGINAL									
2005–06	10 523.6	7 406.0	9 678.2	1 827.9	11 490.3	854.1	1 876.1	269.6	43 925.9
2006–07	9 795.7	6 633.5	11 664.4	2 300.4	14 564.4	779.4	1 535.4	265.3	47 538.5
2007–08	10 664.5	6 414.8	14 430.6	2 258.6	16 898.0	714.3	1 105.3	324.3	52 810.4
2007									
March	2 465.8	1 572.9	2 836.6	577.0	3 635.3	238.4	351.3	59.7	11 737.1
June	2 799.0	1 749.2	3 346.7	637.6	4 017.1	251.3	294.4	61.1	13 156.4
September	2 046.2	1 506.9	3 210.7	494.1	4 236.5	140.7	269.4	87.4	11 991.9
December	2 576.7	1 555.6	3 634.7	548.9	4 277.0	177.9	199.0	71.0	13 040.8
2008									
March	2 731.1	1 698.8	3 530.5	558.0	4 273.1	187.4	^ 255.5	81.8	13 316.3
June	3 310.5	1 653.6	4 054.7	657.6	4 111.4	208.3	381.4	^ 84.1	14 461.4
SEASONALLY ADJUSTED									
2007									
March	2 617.0	1 576.5	2 983.7	609.7	3 715.5	214.3	376.9	59.1	12 411.5
June	2 515.6	1 651.8	3 220.0	588.1	4 041.1	210.4	286.4	57.8	12 312.6
September	2 147.6	1 620.5	3 236.9	537.4	4 369.6	196.0	248.7	91.8	12 636.7
December	2 610.5	1 536.0	3 609.5	532.2	4 088.5	199.6	208.9	71.0	12 836.9
2008									
March	2 888.6	1 712.9	3 736.6	589.5	4 402.6	169.7	^ 271.9	81.1	14 128.1
June	2 961.3	1 568.6	3 891.7	608.4	4 167.6	174.8	369.3	^ 81.0	13 494.7
TREND									
2007									
March	2 477.6	1 630.5	2 972.6	599.3	3 788.0	200.8	370.9	66.3	12 128.6
June	2 424.0	1 606.7	3 152.2	579.5	4 063.4	209.9	297.4	68.3	12 396.3
September	2 402.7	1 607.6	3 345.1	551.4	4 202.7	202.7	239.3	74.4	12 678.9
December	2 552.7	1 614.4	3 543.4	551.1	4 267.7	190.1	238.9	79.7	13 121.3
2008									
March	2 798.6	1 617.1	3 736.8	574.8	4 259.1	179.6	278.8	80.0	13 561.5
June	3 007.3	1 619.2	3 888.6	603.4	4 230.3	171.3	334.0	79.1	13 840.6

^ estimate has a relative standard error of 10% to less than 25% and should be used with caution

(a) Reference year for chain volume measures is 2005–06. See paragraphs 24–27 of the Explanatory Notes.

VALUE OF WORK DONE, States and territories—Chain volume measures(a)—Change from previous period

	NSW	Vic.	Qld	SA	WA	Tas.	NT	ACT	Aust.
Period	%	%	%	%	%	%	%	%	%
ORIGINAL									
2005–06	7.1	19.5	28.3	-12.0	75.4	31.0	3.7	4.0	25.7
2006–07	-6.9	-10.4	20.5	25.8	26.8	-8.8	-18.2	-1.6	8.2
2007–08	8.9	-3.3	23.7	-1.8	16.0	-8.3	-28.0	22.2	11.1
2007									
March	6.0	-7.5	1.6	-4.2	-7.5	44.5	-15.1	-25.8	-2.3
June	13.5	11.2	18.0	10.5	10.5	5.4	-16.2	2.3	12.1
September	-26.9	-13.9	-4.1	-22.5	5.5	-44.0	-8.5	43.0	-8.9
December	25.9	3.2	13.2	11.1	1.0	26.4	-26.1	-18.8	8.7
2008									
March	6.0	9.2	-2.9	1.7	-0.1	5.3	28.4	15.3	2.1
June	21.2	-2.7	14.8	17.8	-3.8	11.1	49.3	2.8	8.6
SEASONALLY ADJUSTED									
2007									
March	11.0	-5.8	7.9	5.1	-0.7	16.1	-12.1	-26.7	6.0
June	-3.9	4.8	7.9	-3.6	8.8	-1.8	-24.0	-2.2	-0.8
September	-14.6	-1.9	0.5	-8.6	8.1	-6.9	-13.2	58.9	2.6
December	21.5	-5.2	11.5	-1.0	-6.4	1.9	-16.0	-22.6	1.6
2008									
March	10.7	11.5	3.5	10.8	7.7	-15.0	30.2	14.2	10.1
June	2.5	-8.4	4.2	3.2	-5.3	3.0	35.8	-0.2	-4.5
TREND									
2007									
March	1.7	-1.7	5.9	4.1	5.8	5.9	-10.4	-2.3	3.2
June	-2.2	-1.5	6.0	-3.3	7.3	4.5	-19.8	3.0	2.2
September	-0.9	0.1	6.1	-4.9	3.4	-3.4	-19.5	9.0	2.3
December	6.2	0.4	5.9	—	1.5	-6.2	-0.2	7.1	3.5
2008									
March	9.6	0.2	5.5	4.3	-0.2	-5.5	16.7	0.3	3.4
June	7.5	0.1	4.1	5.0	-0.7	-4.6	19.8	-1.1	2.1

— nil or rounded to zero (including null cells)

(a) Reference year for chain volume measures is 2005–06. See paragraph 24–27 of the Explanatory Notes.

VALUE OF WORK DONE

BY THE PRIVATE SECTOR

<i>Period</i>	<i>For the private sector</i>	<i>For the public sector</i>	<i>Total</i>	<i>By the public sector</i>	<i>Total for the public sector(a)</i>	<i>Total</i>
	\$m	\$m	\$m	\$m	\$m	\$m

ORIGINAL

2005-06	26 651.8	6 480.4	33 132.1	10 793.7	17 274.1	43 925.8
2006-07	33 911.2	7 364.3	41 275.5	11 373.4	18 737.7	52 648.9
2007-08	38 971.6	10 854.1	49 825.7	11 295.5	22 149.6	61 121.2
2007						
March	8 528.9	1 999.7	10 528.6	2 602.5	4 602.1	13 131.0
June	9 873.8	2 048.9	11 922.7	2 908.1	4 956.9	14 830.7
September	9 105.0	2 287.6	11 392.6	2 260.6	4 548.2	13 653.1
December	9 578.9	2 644.7	12 223.7	2 627.4	5 272.1	14 851.0
2008						
March	9 582.5	2 856.6	12 439.0	3 012.9	5 869.4	15 451.9
June	10 705.2	3 065.2	13 770.5	3 394.6	6 459.9	17 165.1

SEASONALLY ADJUSTED

2007						
March	9 007.6	2 030.5	11 038.1	2 793.5	4 824.0	13 831.7
June	9 457.1	1 936.0	11 393.1	2 410.4	4 346.4	13 803.5
September	9 363.5	2 387.7	11 751.2	2 564.3	4 952.0	14 315.5
December	9 246.7	2 619.4	11 866.1	2 680.8	5 300.3	14 546.9
2008						
March	10 124.5	2 957.2	13 081.7	3 231.5	6 188.7	16 313.2
June	10 232.6	2 894.6	13 127.2	2 812.4	5 707.0	15 939.7

TREND

2007						
March	(b) 9 045.3	1 894.7	(b) 10 940.0	(b) 2 447.7	(b) 4 342.4	13 387.7
June	9 284.7	2 078.3	11 363.0	2 500.4	4 578.7	13 863.4
September	9 369.7	2 346.0	11 715.7	2 550.2	4 896.2	14 265.8
December	9 558.3	2 629.5	12 187.8	2 627.6	5 257.1	14 815.4
2008						
March	9 880.0	2 853.7	12 733.7	2 706.5	5 560.2	15 440.2
June	10 263.8	2 966.7	13 230.5	2 761.2	5 727.9	15 991.7

(a) Includes work done by the private sector for the public sector and work done by the public sector.

(b) Break in series between December 2006 and March 2007.

VALUE OF WORK DONE, Change from previous period

BY THE PRIVATE SECTOR

<i>Period</i>	<i>For the private sector</i>	<i>For the public sector</i>	<i>Total</i>	<i>By the public sector</i>	<i>Total for the public sector(a)</i>	<i>Total</i>
	%	%	%	%	%	%

ORIGINAL

2005–06	38.5	14.8	33.1	32.0	25.0	32.9
2006–07	27.2	13.6	24.6	5.4	8.5	19.9
2007–08	14.9	47.4	20.7	–0.7	18.2	16.1
2007						
March	3.0	16.4	5.3	–18.0	–5.9	–0.3
June	15.8	2.5	13.2	11.7	7.7	12.9
September	–7.8	11.7	–4.4	–22.3	–8.2	–7.9
December	5.2	15.6	7.3	16.2	15.9	8.8
2008						
March	—	8.0	1.8	14.7	11.3	4.0
June	11.7	7.3	10.7	12.7	10.1	11.1

SEASONALLY ADJUSTED

2007						
March	14.5	19.2	15.4	–13.7	–2.4	8.0
June	5.0	–4.7	3.2	–13.7	–9.9	–0.2
September	–1.0	23.3	3.1	6.4	13.9	3.7
December	–1.2	9.7	1.0	4.5	7.0	1.6
2008						
March	9.5	12.9	10.2	20.5	16.8	12.1
June	1.1	–2.1	0.3	–13.0	–7.8	–2.3

TREND

2007						
March	(b)np	7.6	(b)np	(b)np	(b)np	4.4
June	2.6	9.7	3.9	2.2	5.4	3.6
September	0.9	12.9	3.1	2.0	6.9	2.9
December	2.0	12.1	4.0	3.0	7.4	3.9
2008						
March	3.4	8.5	4.5	3.0	5.8	4.2
June	3.9	4.0	3.9	2.0	3.0	3.6

— nil or rounded to zero (including null cells)

np not available for publication but included in totals where applicable, unless otherwise indicated

(a) Includes work done by the private sector for the public sector and work done by the public sector.

(b) Break in series between December 2006 and March 2007.

VALUE OF WORK DONE, States and territories

	NSW	Vic.	Qld	SA	WA	Tas.	NT	ACT	Aust.
<i>Period</i>	\$m	\$m	\$m	\$m	\$m	\$m	\$m	\$m	\$m
ORIGINAL									
2005-06	10 523.6	7 406.0	9 678.2	1 827.9	11 490.2	854.1	1 876.1	269.6	43 925.8
2006-07	10 825.1	7 216.5	12 946.8	2 558.3	16 227.1	885.9	1 698.3	290.9	52 648.9
2007-08	12 326.9	7 339.3	16 807.3	2 602.1	19 559.2	837.2	1 279.5	369.8	61 121.2
2007									
March	2 756.7	1 725.2	3 173.0	655.2	4 084.8	274.0	394.6	67.4	13 131.0
June	3 169.0	1 943.8	3 771.6	718.1	4 541.4	288.3	330.4	68.1	14 830.7
September	2 326.7	1 695.1	3 653.9	560.7	4 849.8	162.5	305.7	98.9	13 653.1
December	2 937.5	1 760.5	4 165.1	624.1	4 854.3	203.2	226.3	80.0	14 851.0
2008									
March	3 147.9	1 944.7	4 121.7	643.7	4 986.0	219.2	^ 295.3	93.4	15 451.9
June	3 914.7	1 939.0	4 866.7	773.6	4 869.1	252.3	452.2	^ 97.5	17 165.1
SEASONALLY ADJUSTED									
2007									
March	2 919.8	1 731.9	3 333.1	691.0	4 174.7	241.8	422.9	67.2	13 831.7
June	2 841.1	1 839.3	3 623.8	660.9	4 568.5	237.1	321.3	64.9	13 803.5
September	2 442.9	1 818.1	3 667.8	606.2	4 968.8	220.7	282.9	103.9	14 315.5
December	2 977.2	1 733.6	4 118.4	601.6	4 609.5	222.4	238.0	80.2	14 546.9
2008									
March	3 330.9	1 955.3	4 343.6	676.1	5 102.7	193.5	^ 315.0	92.7	16 313.2
June	3 503.1	1 834.2	4 651.1	711.6	4 902.9	206.4	438.9	^ 93.9	15 939.7
TREND									
2007									
March	2 758.9	1 791.9	3 321.1	671.8	4 262.9	226.2	414.3	74.0	13 387.7
June	2 730.9	1 786.4	3 544.9	653.2	4 588.8	236.4	334.7	77.1	13 863.4
September	2 727.9	1 802.2	3 786.1	622.2	4 759.2	227.5	270.8	84.2	14 265.8
December	2 923.0	1 826.5	4 059.3	625.5	4 866.7	213.9	273.7	90.3	14 815.4
2008									
March	3 243.4	1 852.7	4 355.9	660.6	4 918.4	205.2	325.1	91.5	15 440.2
June	3 525.1	1 880.0	4 628.3	701.3	4 954.7	200.6	394.6	91.1	15 991.7

^ estimate has a relative standard error of 10% to less than 25% and should be used with caution

VALUE OF WORK DONE, States and territories—Change from previous period

	NSW	Vic.	Qld	SA	WA	Tas.	NT	ACT	Aust.
Period	%	%	%	%	%	%	%	%	%
ORIGINAL									
2005–06	12.7	25.3	36.6	-7.0	85.8	43.3	8.4	9.0	32.9
2006–07	2.9	-2.6	33.8	40.0	41.2	3.7	-9.5	7.9	19.9
2007–08	13.9	1.7	29.8	1.7	20.5	-5.5	-24.7	27.1	16.1
2007									
March	9.1	-5.9	3.1	-0.6	-6.1	48.0	-13.4	-22.2	-0.3
June	15.0	12.7	18.9	9.6	11.2	5.2	-16.3	1.0	12.9
September	-26.6	-12.8	-3.1	-21.9	6.8	-43.6	-7.5	45.2	-7.9
December	26.3	3.9	14.0	11.3	0.1	25.1	-26.0	-19.1	8.8
2008									
March	7.2	10.5	-1.0	3.1	2.7	7.9	30.5	16.7	4.0
June	24.4	-0.3	18.1	20.2	-2.3	15.1	53.1	4.4	11.1
SEASONALLY ADJUSTED									
2007									
March	14.1	-4.1	9.5	9.0	0.7	19.1	-10.3	-23.0	8.0
June	-2.7	6.2	8.7	-4.4	9.4	-1.9	-24.0	-3.3	-0.2
September	-14.0	-1.2	1.2	-8.3	8.8	-7.0	-12.0	60.0	3.7
December	21.9	-4.6	12.3	-0.8	-7.2	0.8	-15.9	-22.8	1.6
2008									
March	11.9	12.8	5.5	12.4	10.7	-13.0	32.3	15.6	12.1
June	5.2	-6.2	7.1	5.3	-3.9	6.7	39.3	1.4	-2.3
TREND									
2007									
March	3.5	-0.1	7.2	5.7	7.4	7.5	-9.4	-0.4	4.4
June	-1.0	-0.3	6.7	-2.8	7.6	4.5	-19.2	4.2	3.6
September	-0.1	0.9	6.8	-4.7	3.7	-3.8	-19.1	9.2	2.9
December	7.2	1.3	7.2	0.5	2.3	-6.0	1.1	7.2	3.9
2008									
March	11.0	1.4	7.3	5.6	1.1	-4.0	18.8	1.3	4.2
June	8.7	1.5	6.3	6.2	0.7	-2.3	21.4	-0.4	3.6

ACTIVITY, States and territories: **Original**

	NSW	Vic.	Qld	SA	WA	Tas.	NT	ACT	Aust.
Period	\$m	\$m	\$m	\$m	\$m	\$m	\$m	\$m	\$m
VALUE OF WORK COMMENCED DURING PERIOD									
2005-06	10 081.7	5 995.4	11 663.3	2 311.1	16 975.1	834.5	384.0	344.9	48 590.0
2006-07	11 607.4	6 435.2	19 263.6	3 355.6	15 344.3	766.0	1 363.9	277.8	58 413.8
2007-08	16 646.0	8 135.4	20 658.1	2 984.4	28 343.2	908.4	2 145.4	401.2	80 222.0
2007									
March	2 899.8	1 261.2	5 202.0	607.0	5 341.8	250.0	118.2	51.1	15 731.1
June	3 521.0	1 722.4	4 712.6	590.0	2 074.0	207.8	152.6	61.4	13 041.7
September	4 250.1	2 239.0	6 406.8	779.4	13 489.5	169.9	247.8	90.6	27 673.2
December	4 145.9	1 279.5	4 767.0	715.4	3 955.5	216.1	169.6	73.2	15 322.3
2008									
March	4 193.3	2 535.4	4 709.6	^ 574.6	5 639.5	217.8	* 1 101.7	^ 109.3	19 081.3
June	4 056.7	2 081.5	4 774.7	^ 914.9	5 258.7	304.5	626.3	^ 128.0	18 145.2
VALUE OF WORK DONE DURING PERIOD									
2005-06	10 523.6	7 406.0	9 678.2	1 827.9	11 490.2	854.1	1 876.1	269.6	43 925.8
2006-07	10 825.1	7 216.5	12 946.8	2 558.3	16 227.1	885.9	1 698.3	290.9	52 648.9
2007-08	12 326.9	7 339.3	16 807.3	2 602.1	19 559.2	837.2	1 279.5	369.8	61 121.2
2007									
March	2 756.7	1 725.2	3 173.0	655.2	4 084.8	274.0	394.6	67.4	13 131.0
June	3 169.0	1 943.8	3 771.6	718.1	4 541.4	288.3	330.4	68.1	14 830.7
September	2 326.7	1 695.1	3 653.9	560.7	4 849.8	162.5	305.7	98.9	13 653.1
December	2 937.5	1 760.5	4 165.1	624.1	4 854.3	203.2	226.3	80.0	14 851.0
2008									
March	3 147.9	1 944.7	4 121.7	643.7	4 986.0	219.2	^ 295.3	93.4	15 451.9
June	3 914.7	1 939.0	4 866.7	773.6	4 869.1	252.3	452.2	^ 97.5	17 165.1
VALUE OF WORK YET TO BE DONE									
2005-06	2 895.3	3 423.7	5 264.1	783.4	11 608.0	210.5	413.6	70.0	24 668.6
2006-07	3 328.2	2 601.5	11 876.1	1 478.7	12 752.8	138.1	318.3	16.7	32 510.3
2007-08	7 398.4	3 512.4	14 047.8	1 365.5	24 201.7	206.2	1 738.8	33.0	52 503.8
2007									
March	3 034.4	2 856.5	10 171.2	1 621.1	14 743.7	202.4	354.8	27.8	33 011.7
June	3 328.2	2 601.5	11 876.1	1 478.7	12 752.8	138.1	318.3	16.7	32 510.3
September	5 453.1	3 433.4	14 286.5	1 611.8	22 200.6	215.3	250.2	19.0	47 470.1
December	6 209.7	3 128.4	14 466.8	1 615.4	22 173.8	204.7	200.1	^ 10.1	48 008.9
2008									
March	8 077.5	3 502.4	14 646.1	1 574.6	23 210.3	166.5	^ 1 274.4	19.8	52 471.5
June	7 398.4	3 512.4	14 047.8	1 365.5	24 201.7	206.2	^ 1 738.8	33.0	52 503.8

^ estimate has a relative standard error of 10% to less than 25% and should be used with caution

* estimate has a relative standard error of 25% to 50% and should be used with caution

	NSW	Vic.	Qld	SA	WA	Tas.	NT	ACT	Aust.
<i>Period</i>	%	%	%	%	%	%	%	%	%
.....									
VALUE OF WORK COMMENCED DURING PERIOD									
2005–06	8.6	-31.4	23.6	10.8	90.5	72.7	-84.7	46.9	16.6
2006–07	15.1	7.3	65.2	45.2	-9.6	-8.2	255.2	-19.5	20.2
2007–08	43.4	26.4	7.2	-11.1	84.7	18.6	57.3	44.4	37.3
2007									
March	17.9	-26.2	13.7	-55.3	10.5	51.9	-78.9	-51.7	-0.2
June	21.4	36.6	-9.4	-2.8	-61.2	-16.9	29.1	20.2	-17.1
September	20.7	30.0	36.0	32.1	550.4	-18.2	62.4	47.6	112.2
December	-2.5	-42.9	-25.6	-8.2	-70.7	27.2	-31.6	-19.2	-44.6
2008									
March	1.1	98.1	-1.2	-19.7	42.6	0.8	549.5	49.4	24.5
June	-3.3	-17.9	1.4	59.2	-6.8	39.8	-43.2	17.1	-4.9
.....									
VALUE OF WORK DONE DURING PERIOD									
2005–06	12.7	25.3	36.6	-7.0	85.8	43.3	8.4	9.0	32.9
2006–07	2.9	-2.6	33.8	40.0	41.2	3.7	-9.5	7.9	19.9
2007–08	13.9	1.7	29.8	1.7	20.5	-5.5	-24.7	27.1	16.1
2007									
March	9.1	-5.9	3.1	-0.6	-6.1	48.0	-13.4	-22.2	-0.3
June	15.0	12.7	18.9	9.6	11.2	5.2	-16.3	1.0	12.9
September	-26.6	-12.8	-3.1	-21.9	6.8	-43.6	-7.5	45.2	-7.9
December	26.3	3.9	14.0	11.3	0.1	25.1	-26.0	-19.1	8.8
2008									
March	7.2	10.5	-1.0	3.1	2.7	7.9	30.5	16.7	4.0
June	24.4	-0.3	18.1	20.2	-2.3	15.1	53.1	4.4	11.1
.....									
VALUE OF WORK YET TO BE DONE									
2005–06	-23.9	-31.4	26.3	99.7	79.2	14.3	-77.4	358.9	12.8
2006–07	15.0	-24.0	125.6	88.7	9.9	-34.4	-23.1	-76.2	31.8
2007–08	122.3	35.0	18.3	-7.7	89.8	49.3	446.3	98.0	61.5
2007									
March	8.0	-6.9	26.4	-4.8	11.0	-5.5	-32.5	-66.9	11.0
June	9.7	-8.9	16.8	-8.8	-13.5	-31.8	-10.3	-39.9	-1.5
September	63.8	32.0	20.3	9.0	74.1	55.9	-21.4	14.2	46.0
December	13.9	-8.9	1.3	0.2	-0.1	-4.9	-20.0	-46.9	1.1
2008									
March	30.1	12.0	1.2	-2.5	4.7	-18.6	536.9	95.9	9.3
June	-8.4	0.3	-4.1	-13.3	4.3	23.8	36.4	66.9	0.1

	Roads, highways and subdivisions	Bridges	Railways	Harbours	Water storage and supply	Sewerage and drainage	Electricity generation, transmission and distribution	Pipelines	Recreation
Period	\$m	\$m	\$m	\$m	\$m	\$m	\$m	\$m	\$m
VALUE OF WORK COMMENCED DURING PERIOD									
2005-06	10 220.4	913.3	1 943.5	1 725.9	1 355.4	1 126.1	6 377.0	781.5	2 050.0
2006-07	13 409.7	2 459.3	2 905.9	1 521.9	3 400.4	1 900.4	8 338.4	1 274.5	2 228.3
2007-08	14 384.1	991.9	3 022.5	2 298.3	5 747.9	3 136.9	9 023.2	852.8	2 574.4
2007									
March	^ 3 032.9	1 559.0	749.4	1 239.8	^ 442.3	^ 290.0	1 942.4	341.4	^ 513.6
June	2 532.0	**440.4	695.8	^ 86.5	^ 868.7	552.4	2 752.0	118.5	^ 605.1
September	4 029.7	319.2	344.5	^ 172.9	^ 1 214.6	713.6	2 070.1	^ 63.0	^ 787.0
December	^ 3 290.7	*101.8	370.4	*85.3	2 618.5	^ 768.7	1 883.6	^ 72.1	^ 624.5
2008									
March	3 363.6	^ 356.2	1 210.7	1 438.9	^ 1 286.7	*799.3	^ 2 060.6	**398.3	^ 602.7
June	3 700.1	*214.7	1 096.8	601.1	^ 628.1	^ 855.3	3 008.9	*319.5	^ 560.2
VALUE OF WORK DONE DURING PERIOD									
2005-06	10 665.4	496.6	2 230.5	1 012.9	1 359.9	1 187.5	5 586.5	1 010.7	1 711.0
2006-07	11 855.9	927.2	2 681.6	1 181.2	1 728.7	1 558.7	7 479.8	1 122.4	1 790.3
2007-08	12 586.7	1 203.5	3 030.7	1 522.7	4 696.4	2 639.5	8 662.8	663.6	1 781.0
2007									
March	2 948.8	371.0	708.6	267.9	417.2	349.1	1 946.8	187.9	433.1
June	3 154.4	221.9	896.3	283.7	590.5	535.2	2 108.8	343.1	505.0
September	2 737.0	275.1	755.5	294.7	854.2	545.7	1 809.4	338.4	392.2
December	3 116.3	306.7	849.8	302.0	1 229.0	^ 631.6	1 897.7	111.7	427.3
2008									
March	3 066.4	297.4	752.1	429.8	1 341.1	^ 695.1	2 298.5	^ 59.9	454.7
June	3 667.1	324.3	673.3	496.2	1 272.0	^ 767.1	2 657.2	^ 153.6	506.9
VALUE OF WORK YET TO BE DONE DURING PERIOD									
2005-06	5 065.5	428.3	1 360.1	1 223.0	431.3	426.4	2 942.4	401.3	129.5
2006-07	6 457.4	1 738.2	1 863.9	1 486.0	2 528.3	781.0	3 804.1	504.4	317.7
2007-08	8 137.6	1 182.9	2 257.4	2 201.8	2 746.0	1 209.5	4 492.9	435.2	362.1
2007									
March	7 093.1	1 590.9	1 975.4	1 698.3	1 889.0	737.2	2 874.8	763.9	^ 200.9
June	6 457.4	^ 1 738.2	1 863.9	1 486.0	2 528.3	781.0	3 804.1	504.4	*317.7
September	7 939.7	^ 1 719.6	1 569.8	1 337.3	3 305.9	^ 1 238.4	3 910.8	242.3	*604.6
December	7 825.6	1 289.1	1 451.6	1 116.0	4 420.1	^ 1 362.6	4 199.5	186.1	*649.4
2008									
March	8 085.1	1 396.8	1 760.4	2 115.3	^ 4 403.9	*1 743.6	3 471.7	**362.7	*648.3
June	8 137.6	1 182.9	2 257.4	2 201.8	2 746.0	^ 1 209.5	4 492.9	*435.2	362.1

^ estimate has a relative standard error of 10% to less than 25% and should be used with caution

* estimate has a relative standard error of 25% to 50% and should be used with caution

** estimate has a relative standard error greater than 50% and is considered too unreliable for general use

	Telecom- munications	Oil, gas, coal and other minerals	Other heavy industry	Other	Total
Period	\$m	\$m	\$m	\$m	\$m

.....

VALUE OF WORK COMMENCED DURING PERIOD

2005-06	4 694.9	16 057.4	632.3	712.5	48 590.0
2006-07	5 000.6	14 439.1	912.5	622.7	58 413.8
2007-08	4 345.1	31 634.3	1 304.8	906.0	80 222.0
2007					
March	1 128.2	4 274.4	86.3	^ 131.5	15 731.1
June	1 769.0	2 324.8	^ 184.7	^ 111.9	13 041.7
September	893.4	16 681.8	^ 234.5	*148.9	27 673.2
December	1 091.1	4 032.6	^ 243.7	^ 139.2	15 322.3
2008					
March	1 067.1	6 046.0	^ 204.8	*246.3	19 081.3
June	1 293.5	4 873.9	**621.7	*371.6	18 145.2

.....

VALUE OF WORK DONE DURING PERIOD

2005-06	4 705.7	12 538.3	823.4	597.4	43 925.8
2006-07	4 946.0	15 648.3	1 193.0	535.9	52 648.9
2007-08	4 434.1	18 410.5	938.8	550.8	61 121.2
2007					
March	1 147.8	3 885.8	326.5	^ 140.5	13 131.0
June	1 720.9	4 021.1	325.8	^ 124.0	14 830.7
September	899.7	4 395.1	242.6	^ 113.5	13 653.1
December	1 121.4	4 508.4	239.4	^ 109.8	14 851.0
2008					
March	1 068.3	4 553.4	264.3	^ 171.0	15 451.9
June	1 344.8	4 953.6	192.5	^ 156.5	17 165.1

.....

VALUE OF WORK YET TO BE DONE DURING PERIOD

2005-06	153.5	11 424.0	645.1	38.3	24 668.6
2006-07	216.4	12 359.5	410.5	42.9	32 510.3
2007-08	213.7	28 403.3	658.0	203.3	52 503.8
2007					
March	147.5	13 440.7	534.1	^ 66.0	33 011.7
June	216.4	12 359.5	410.5	*42.9	32 510.3
September	181.0	24 928.3	434.5	*57.8	47 470.1
December	149.9	24 847.8	407.1	^ 104.1	48 008.9
2008					
March	188.6	27 848.5	321.3	^ 125.4	52 471.5
June	213.7	28 403.3	*658.0	^ 203.3	52 503.8

-
- ^ estimate has a relative standard error of 10% to less than 25% and should be used with caution
- * estimate has a relative standard error of 25% to 50% and should be used with caution
- ** estimate has a relative standard error greater than 50% and is considered too unreliable for general use

WORK COMMENCED BY THE PRIVATE SECTOR, By type: **Original**

	<i>Roads, highways and subdivisions</i>	<i>Bridges</i>	<i>Railways</i>	<i>Harbours</i>	<i>Water storage and supply</i>	<i>Sewerage and drainage</i>	<i>Electricity generation, transmission and distribution</i>	<i>Pipelines</i>	<i>Recreation</i>
<i>Period</i>	\$m	\$m	\$m	\$m	\$m	\$m	\$m	\$m	\$m
BY THE PRIVATE SECTOR FOR THE PRIVATE SECTOR									
2005-06	4 616.1	15.5	814.7	1 557.6	415.8	303.3	2 931.7	456.8	1 580.9
2006-07	5 529.2	122.3	1 066.0	1 378.1	503.9	462.1	3 980.3	1 259.5	1 545.9
2007-08	5 423.9	199.5	1 458.2	340.0	990.3	913.5	3 885.5	835.3	1 876.4
2007									
March	836.1	*27.9	279.9	1 211.6	^ 98.3	^ 94.3	684.2	337.2	^ 355.5
June	^ 924.1	^ 23.8	109.2	^ 54.1	^ 113.0	^ 195.3	1 707.6	109.5	^ 453.8
September	^ 1 072.2	125.9	^ 105.8	**38.5	*195.4	^ 255.0	1 097.6	^ 61.9	*487.7
December	^ 1 492.8	*16.2	^ 152.4	*61.8	^ 331.1	*213.0	742.5	^ 64.7	^ 464.6
2008									
March	^ 1 543.8	**49.6	^ 895.3	*77.3	*331.3	*220.2	*750.0	**395.0	^ 488.9
June	^ 1 315.0	7.8	304.6	162.3	^ 132.5	^ 225.3	1 295.4	*313.8	^ 435.2
BY THE PRIVATE SECTOR FOR THE PUBLIC SECTOR									
2005-06	3 227.8	796.8	440.1	154.2	574.0	326.4	456.1	2.0	189.1
2006-07	4 928.2	2 161.9	425.3	115.9	2 218.3	766.7	370.4	4.4	275.2
2007-08	5 656.9	669.0	889.3	742.0	3 276.6	1 137.7	368.4	7.7	240.0
2007									
March	^ 1 559.6	1 483.2	80.9	*20.6	^ 188.3	66.0	*149.3	^ 3.0	*69.7
June	966.1	**387.2	84.0	**26.1	457.9	213.0	49.2	*1.0	*54.4
September	1 910.5	163.2	85.9	128.4	259.6	^ 165.7	59.8	**0.3	*79.0
December	1 106.7	*59.4	81.2	^ 19.0	^ 2 026.0	*245.7	^ 168.5	^ 2.0	*63.2
2008									
March	1 092.6	^ 266.4	183.2	543.5	^ 730.3	*351.8	52.8	^ 2.7	*44.9
June	1 547.1	*180.1	539.0	*51.1	^ 260.7	374.4	*87.2	^ 2.7	*52.9
TOTAL BY THE PRIVATE SECTOR									
2005-06	7 843.9	812.3	1 254.8	1 711.8	989.8	629.7	3 387.8	458.8	1 770.0
2006-07	10 457.5	2 284.2	1 491.3	1 494.0	2 722.2	1 228.9	4 350.6	1 263.9	1 821.2
2007-08	11 080.8	868.5	2 347.5	1 082.0	4 267.0	2 051.3	4 253.9	842.9	2 116.4
2007									
March	^ 2 395.7	1 511.1	360.9	1 232.2	^ 286.6	^ 160.2	833.5	340.2	^ 425.2
June	1 890.1	**411.1	193.2	^ 80.1	570.9	408.3	1 756.8	110.6	^ 508.2
September	2 982.7	289.0	191.8	^ 166.9	^ 455.0	^ 420.8	1 157.3	^ 62.2	^ 566.7
December	^ 2 599.6	*75.6	^ 233.6	*80.8	2 357.1	*458.8	911.0	^ 66.7	^ 527.9
2008									
March	^ 2 636.4	^ 316.0	1 078.5	620.9	^ 1 061.6	*572.0	*802.8	**397.7	^ 533.7
June	2 862.1	*187.9	843.6	213.4	^ 393.2	^ 599.8	1 382.6	*316.5	^ 488.1

^ estimate has a relative standard error of 10% to less than 25% and should be used with caution

* estimate has a relative standard error of 25% to 50% and should be used with caution

** estimate has a relative standard error greater than 50% and is considered too unreliable for general use

	Telecom- munications	Oil, gas, coal and other minerals	Other heavy industry	Other	Total
Period	\$m	\$m	\$m	\$m	\$m

BY THE PRIVATE SECTOR FOR THE PRIVATE SECTOR

2005-06	1 192.8	15 725.7	625.1	631.7	30 867.7
2006-07	3 565.8	14 013.8	897.8	503.3	34 828.0
2007-08	4 321.6	31 460.6	1 293.3	820.3	53 818.4
2007					
March	1 113.5	4 178.3	86.0	^ 110.4	9 413.2
June	1 757.4	2 215.2	^ 181.1	^ 80.3	7 924.4
September	887.6	16 613.4	^ 230.4	^ 124.0	21 295.4
December	1 083.7	3 970.1	^ 240.3	^ 134.4	8 967.8
2008					
March	1 061.0	6 017.3	^ 204.5	^ 223.5	12 257.6
June	1 289.3	4 859.8	**618.1	*338.4	11 297.6

BY THE PRIVATE SECTOR FOR THE PUBLIC SECTOR

2005-06	34.3	111.9	0.9	73.1	6 386.6
2006-07	41.4	11.5	2.4	98.0	11 419.8
2007-08	21.1	22.3	4.8	82.8	13 118.7
2007					
March	**14.3	1.5	0.2	^ 8.0	^ 3 644.8
June	^ 10.8	2.2	—	*27.8	^ 2 279.7
September	5.1	6.7	*1.6	**24.5	2 890.3
December	^ 6.9	**13.2	*3.1	**4.2	3 799.2
2008					
March	^ 5.2	^ 1.2	—	*22.7	3 297.4
June	**3.9	^ 1.2	—	*31.4	3 131.8

TOTAL BY THE PRIVATE SECTOR

2005-06	1 227.1	15 837.6	625.9	704.8	37 254.4
2006-07	3 607.2	14 025.3	900.1	601.4	46 247.8
2007-08	4 342.8	31 482.9	1 298.1	903.1	66 937.1
2007					
March	1 127.8	4 179.8	86.3	^ 118.5	13 058.0
June	1 768.2	2 217.4	^ 181.1	^ 108.1	10 204.1
September	892.7	16 620.0	^ 232.0	*148.5	24 185.7
December	1 090.6	3 983.3	^ 243.5	^ 138.7	12 767.1
2008					
March	1 066.2	6 018.5	^ 204.5	*246.1	15 555.0
June	1 293.2	4 861.0	**618.1	*369.8	14 429.4

^ estimate has a relative standard error of 10% to less than 25% and should be used with caution

* estimate has a relative standard error of 25% to 50% and should be used with caution

** estimate has a relative standard error greater than 50% and is considered too unreliable for general use

— nil or rounded to zero (including null cells)

	<i>Roads, highways and subdivisions</i>	<i>Bridges</i>	<i>Railways</i>	<i>Harbours</i>	<i>Water storage and supply</i>	<i>Sewerage and drainage</i>	<i>Electricity generation, transmission and distribution</i>	<i>Pipelines</i>	<i>Recreation</i>
<i>Period</i>	\$m	\$m	\$m	\$m	\$m	\$m	\$m	\$m	\$m
BY THE PRIVATE SECTOR FOR THE PRIVATE SECTOR									
2005-06	5 550.2	16.7	480.2	872.0	447.6	318.7	1 977.0	895.5	1 286.7
2006-07	5 441.4	69.0	1 015.9	1 022.7	483.7	370.4	3 065.0	919.6	1 219.2
2007-08	5 104.5	93.7	1 567.9	1 030.7	750.5	876.9	3 729.7	624.0	1 127.2
2007									
March	1 209.6	^ 20.9	293.3	237.6	^ 119.3	^ 72.1	790.2	158.3	^ 283.2
June	1 344.4	^ 20.5	431.6	234.1	^ 109.4	^ 133.3	920.5	314.3	^ 338.6
September	1 168.7	^ 28.4	381.1	268.4	^ 144.2	^ 208.3	765.4	323.8	^ 255.1
December	1 297.4	^ 16.9	527.3	264.6	^ 216.6	^ 214.4	762.0	95.6	^ 275.9
2008									
March	1 258.3	*32.8	413.9	177.9	^ 228.3	^ 201.3	914.6	^ 56.3	^ 297.5
June	1 380.0	^ 15.5	245.6	319.8	^ 161.4	^ 253.0	1 287.8	^ 148.3	^ 298.7
BY THE PRIVATE SECTOR FOR THE PUBLIC SECTOR									
2005-06	2 877.2	391.1	1 020.8	127.8	589.4	408.5	711.0	4.3	172.3
2006-07	3 637.0	739.6	769.4	128.9	707.5	525.4	497.0	3.3	178.2
2007-08	4 316.5	982.9	593.6	202.6	3 007.7	1 016.2	419.7	9.2	203.4
2007									
March	1 036.0	327.2	158.4	^ 21.0	^ 161.1	114.7	84.3	*1.7	*49.9
June	958.0	168.0	161.5	*42.1	266.9	205.8	156.8	0.7	^ 41.6
September	942.5	224.9	148.5	19.4	^ 517.6	^ 215.0	146.4	^ 1.0	^ 47.2
December	1 064.1	266.8	118.0	^ 31.9	768.0	^ 217.6	104.5	2.7	^ 51.5
2008									
March	1 046.2	226.1	167.7	65.5	869.0	^ 312.6	79.7	^ 2.7	*61.4
June	1 263.7	265.1	159.5	^ 85.8	853.1	^ 271.0	89.1	^ 2.8	*43.3
TOTAL BY THE PRIVATE SECTOR									
2005-06	8 427.4	407.8	1 501.0	999.8	1 037.0	727.2	2 688.1	899.8	1 459.0
2006-07	9 078.4	808.6	1 785.3	1 151.6	1 191.2	895.8	3 561.9	922.9	1 397.5
2007-08	9 421.0	1 076.6	2 161.5	1 233.4	3 758.1	1 893.1	4 149.3	633.2	1 330.6
2007									
March	2 245.6	348.0	451.7	258.5	280.4	186.8	874.5	160.0	^ 333.2
June	2 302.4	188.4	593.1	276.2	376.3	339.1	1 077.3	315.1	^ 380.2
September	2 111.3	253.3	529.6	287.8	661.8	^ 423.2	911.8	324.7	^ 302.4
December	2 361.5	283.8	645.3	296.5	984.6	^ 432.0	866.5	98.4	^ 327.4
2008									
March	2 304.5	258.9	581.6	243.4	1 097.3	^ 513.9	994.2	^ 59.0	^ 358.9
June	2 643.7	280.6	405.0	405.6	1 014.5	^ 524.0	1 376.9	^ 151.1	^ 341.9
^ estimate has a relative standard error of 10% to less than 25% and should be used with caution * estimate has a relative standard error of 25% to 50% and should be used with caution									

	Telecom- munications	Oil, gas, coal and other minerals	Other heavy industry	Other	Total
Period	\$m	\$m	\$m	\$m	\$m

BY THE PRIVATE SECTOR FOR THE PRIVATE SECTOR

2005-06	1 204.4	12 280.6	818.2	504.0	26 651.8
2006-07	3 510.8	15 150.2	1 183.8	459.5	33 911.2
2007-08	4 405.0	18 248.2	925.7	487.7	38 971.6
2007					
March	1 131.7	3 768.1	324.0	^ 120.6	8 528.9
June	1 710.4	3 903.6	322.2	^ 90.9	9 873.8
September	893.5	4 329.5	237.7	^ 101.0	9 105.0
December	1 114.0	4 453.6	235.7	^ 104.9	9 578.9
2008					
March	1 060.3	4 524.7	263.4	^ 153.2	9 582.5
June	1 337.3	4 940.4	188.8	^ 128.6	10 705.2

BY THE PRIVATE SECTOR FOR THE PUBLIC SECTOR

2005-06	57.8	37.8	1.1	81.2	6 480.4
2006-07	38.4	84.4	2.4	52.9	7 364.3
2007-08	24.1	10.9	7.2	60.1	10 854.1
2007					
March	**14.9	23.2	1.2	*6.0	1 999.7
June	^ 8.2	10.1	**0.1	*29.1	2 048.9
September	5.5	3.8	^ 3.2	*12.4	2 287.6
December	^ 6.4	**5.5	*3.4	**4.4	2 644.7
2008					
March	^ 6.4	^ 1.2	**0.6	*17.6	2 856.6
June	*5.8	*0.4	—	*25.8	3 065.2

TOTAL BY THE PRIVATE SECTOR

2005-06	1 262.2	12 318.4	819.2	585.2	33 132.1
2006-07	3 549.1	15 234.6	1 186.3	512.3	41 275.5
2007-08	4 429.1	18 259.1	932.9	547.7	49 825.7
2007					
March	1 146.6	3 791.3	325.2	^ 126.6	10 528.6
June	1 718.6	3 913.7	322.2	^ 120.0	11 922.7
September	899.0	4 333.3	241.0	^ 113.3	11 392.6
December	1 120.3	4 459.1	239.1	^ 109.3	12 223.7
2008					
March	1 066.7	4 525.9	264.0	^ 170.8	12 439.0
June	1 343.1	4 940.8	188.8	^ 154.3	13 770.5

^ estimate has a relative standard error of 10% to less than 25% and should be used with caution

* estimate has a relative standard error of 25% to 50% and should be used with caution

** estimate has a relative standard error greater than 50% and is considered too unreliable for general use

— nil or rounded to zero (including null cells)

	Roads, highways and subdivisions	Bridges	Railways	Harbours	Water storage and supply	Sewerage and drainage	Electricity generation, transmission and distribution
Period	\$m	\$m	\$m	\$m	\$m	\$m	\$m
BY THE PRIVATE SECTOR FOR THE PRIVATE SECTOR							
2005-06	2 468.3	8.5	568.7	1 167.7	35.6	22.7	2 092.1
2006-07	2 408.8	37.2	945.3	1 471.2	89.1	115.7	2 888.7
2007-08	2 472.8	6.8	1 312.4	704.6	166.6	200.1	3 605.5
2007							
March	2 931.3	^ 33.7	1 141.1	1 666.2	81.1	^ 48.5	2 135.6
June	2 408.8	^ 37.2	945.3	1 471.2	89.1	115.7	2 888.7
September	2 438.0	124.8	673.6	1 206.9	*374.2	146.7	3 306.6
December	2 648.6	119.0	616.6	989.0	^ 252.2	*262.8	3 444.2
2008							
March	^ 2 654.1	107.2	1 129.9	877.8	*220.0	*301.8	2 808.6
June	^ 2 472.8	^ 6.8	1 312.4	704.6	^ 166.6	*200.1	3 605.5
BY THE PRIVATE SECTOR FOR THE PUBLIC SECTOR							
2005-06	2 071.6	390.4	646.4	50.0	197.5	177.1	574.7
2006-07	3 435.3	1 662.5	305.2	9.2	2 079.9	469.0	531.0
2007-08	4 595.9	1 129.9	677.8	549.9	2 121.2	783.5	119.3
2007							
March	^ 3 398.8	1 498.4	400.2	^ 27.3	1 587.8	404.3	^ 312.6
June	3 435.3	^ 1 662.5	305.2	^ 9.2	2 079.9	469.0	531.0
September	4 507.1	^ 1 549.4	334.9	121.7	2 105.6	*776.4	205.3
December	4 295.1	1 128.9	523.0	118.9	3 251.7	*701.9	285.7
2008							
March	4 429.0	1 203.9	350.3	594.0	^ 3 461.7	*978.9	250.0
June	4 595.9	1 129.9	677.8	549.9	2 121.2	^ 783.5	^ 119.3
TOTAL BY THE PRIVATE SECTOR							
2005-06	4 540.0	399.0	1 215.1	1 217.7	233.0	199.8	2 666.8
2006-07	5 844.1	1 699.7	1 250.6	1 480.4	2 169.0	584.7	3 419.6
2007-08	7 068.7	1 136.6	1 990.3	1 254.4	2 287.8	983.6	3 724.8
2007							
March	6 330.1	1 532.2	1 541.4	1 693.5	1 668.9	452.7	2 448.2
June	5 844.1	^ 1 699.7	1 250.6	1 480.4	2 169.0	584.7	3 419.6
September	6 945.1	^ 1 674.2	1 008.4	1 328.6	2 479.8	*923.1	3 511.9
December	6 943.7	1 247.9	1 139.6	1 107.9	3 503.9	*964.8	3 729.9
2008							
March	7 083.1	1 311.2	1 480.2	1 471.8	^ 3 681.6	*1 280.7	3 058.6
June	7 068.7	1 136.6	1 990.3	1 254.4	2 287.8	^ 983.6	3 724.8
^ estimate has a relative standard error of 10% to less than 25% and should be used with caution * estimate has a relative standard error of 25% to 50% and should be used with caution							

	Pipelines	Recreation	Telecom- munications	Oil, gas, coal and other minerals	Other heavy industry	Other	Total
Period	\$m	\$m	\$m	\$m	\$m	\$m	\$m
BY THE PRIVATE SECTOR FOR THE PRIVATE SECTOR							
2005-06	186.4	69.9	138.6	11 349.4	645.1	33.2	18 786.2
2006-07	477.9	232.2	201.9	12 358.8	410.5	37.3	21 674.7
2007-08	434.0	77.0	182.4	28 402.3	657.9	190.8	38 413.1
2007							
March	717.5	*71.7	133.4	13 431.9	530.2	^ 57.4	22 979.7
June	477.9	**232.2	201.9	12 358.8	410.5	*37.3	21 674.7
September	229.2	**363.4	167.7	24 924.8	433.2	*51.5	34 440.6
December	181.6	**255.8	135.9	24 847.1	405.6	^ 99.0	34 257.6
2008							
March	**361.9	**275.8	148.6	27 847.8	320.7	^ 118.9	37 173.2
June	*434.0	*77.0	182.4	28 402.3	*657.9	190.8	38 413.1
BY THE PRIVATE SECTOR FOR THE PUBLIC SECTOR							
2005-06	1.4	6.1	12.9	74.3	—	5.0	4 207.3
2006-07	1.7	20.1	9.9	0.7	—	5.1	8 529.4
2007-08	0.4	9.8	27.8	1.0	—	11.8	10 028.4
2007							
March	1.4	**15.5	7.9	8.7	—	^ 4.8	7 667.7
June	^ 1.7	**20.1	9.9	0.7	**—	^ 5.1	8 529.4
September	^ 1.1	**15.8	8.7	3.5	^ 0.4	*5.7	9 635.7
December	**0.4	**23.2	9.8	0.7	**1.3	*5.0	10 345.6
2008							
March	**0.5	**17.0	35.5	0.7	**0.5	*5.8	11 327.7
June	**0.4	*9.8	27.8	1.0	—	*11.8	10 028.4
TOTAL BY THE PRIVATE SECTOR							
2005-06	187.7	76.0	151.5	11 423.7	645.1	38.2	22 993.4
2006-07	479.6	252.3	211.8	12 359.5	410.5	42.4	30 204.1
2007-08	434.3	86.8	210.3	28 403.3	657.9	202.6	48 441.5
2007							
March	718.9	*87.3	141.3	13 440.7	530.2	^ 62.2	30 647.4
June	479.6	**252.3	211.8	12 359.5	410.5	*42.4	30 204.1
September	230.4	**379.2	176.4	24 928.3	433.6	*57.3	44 076.4
December	182.0	**279.0	145.7	24 847.8	407.0	^ 104.1	44 603.3
2008							
March	**362.5	**292.8	184.1	27 848.5	321.2	^ 124.7	48 500.8
June	*434.3	*86.8	210.3	28 403.3	*657.9	^ 202.6	48 441.5

^ estimate has a relative standard error of 10% to less than 25% and should be used with caution

* estimate has a relative standard error of 25% to 50% and should be used with caution

** estimate has a relative standard error greater than 50% and is considered too unreliable for general use

— nil or rounded to zero (including null cells)

	<i>Roads, highways and subdivisions</i>	<i>Bridges</i>	<i>Railways</i>	<i>Harbours</i>	<i>Water storage and supply</i>	<i>Sewerage and drainage</i>	<i>Electricity generation, transmission and distribution</i>	<i>Pipelines</i>
<i>Period</i>	\$m	\$m	\$m	\$m	\$m	\$m	\$m	\$m
.....								
VALUE OF WORK COMMENCED DURING PERIOD								
2005-06	2 376.5	101.0	688.7	14.0	365.6	496.3	2 989.2	322.7
2006-07	2 952.2	175.1	1 414.6	27.9	678.1	671.5	3 987.8	10.6
2007-08	3 303.3	123.4	675.0	1 216.3	1 480.9	1 085.6	4 769.3	9.9
2007								
March	637.3	*47.9	388.5	^ 7.6	*155.7	*129.7	1 108.8	1.2
June	641.9	29.3	502.6	6.4	*297.7	^ 144.1	995.2	7.9
September	1 046.9	30.1	152.7	6.1	^ 759.6	^ 292.9	912.8	0.8
December	691.2	26.2	136.9	4.5	*261.4	*309.9	972.6	5.5
2008								
March	727.2	*40.2	132.2	818.1	**225.1	**227.3	1 257.8	0.6
June	838.0	26.8	253.2	387.7	**234.9	**255.5	1 626.2	3.0
.....								
VALUE OF WORK DONE DURING PERIOD								
2005-06	2 238.0	88.8	729.6	13.0	322.9	460.4	2 898.4	110.9
2006-07	2 777.5	118.6	896.3	29.6	537.6	662.8	3 917.9	199.4
2007-08	3 165.7	126.9	869.2	289.3	938.2	746.4	4 513.4	30.3
2007								
March	703.2	^ 22.9	257.0	^ 9.4	^ 136.8	^ 162.3	1 072.3	27.9
June	852.0	^ 33.4	303.2	7.5	^ 214.1	^ 196.1	1 031.4	28.0
September	625.7	21.7	226.0	6.9	^ 192.4	^ 122.5	897.6	13.7
December	754.8	22.9	204.5	5.5	^ 244.5	^ 199.6	1 031.2	13.3
2008								
March	761.9	^ 38.5	170.5	186.4	^ 243.9	^ 181.2	1 304.3	0.9
June	1 023.3	^ 43.8	268.3	90.5	^ 257.6	^ 243.1	1 280.3	2.5
.....								
VALUE OF WORK YET TO BE DONE								
2005-06	525.6	29.3	145.0	5.3	198.2	226.6	275.6	213.6
2006-07	613.4	38.5	613.3	5.6	359.4	196.3	384.5	24.8
2007-08	1 069.0	46.3	267.2	947.4	458.1	225.9	768.1	0.8
2007								
March	763.0	*58.7	434.0	4.8	^ 220.1	^ 284.5	426.7	45.0
June	613.4	^ 38.5	613.3	5.6	*359.4	^ 196.3	384.5	24.8
September	994.6	^ 45.4	561.3	8.7	^ 826.1	315.3	398.9	12.0
December	881.9	41.2	312.0	8.0	^ 916.2	^ 397.9	469.6	4.1
2008								
March	1 001.9	*85.6	280.2	643.5	722.3	^ 462.9	413.2	0.3
June	*1 069.0	^ 46.3	267.2	947.4	^ 458.1	^ 225.9	768.1	0.8

^ estimate has a relative standard error of 10% to less than 25% and should be used with caution

* estimate has a relative standard error of 25% to 50% and should be used with caution

** estimate has a relative standard error greater than 50% and is considered too unreliable for general use

	Recreation	Telecom- munications	Oil, gas, coal and other minerals	Other heavy industry	Other	Total
Period	\$m	\$m	\$m	\$m	\$m	\$m

VALUE OF WORK COMMENCED DURING PERIOD

2005-06	280.0	3 467.8	219.8	6.3	7.7	11 335.7
2006-07	407.2	1 393.4	413.8	12.3	21.4	12 166.0
2007-08	458.0	2.3	151.4	6.7	2.8	13 284.9
2007						
March	88.4	0.4	94.6	—	13.1	2 673.1
June	96.9	0.8	107.4	3.6	*3.8	2 837.6
September	220.3	0.7	61.8	2.5	^ 0.3	3 487.5
December	96.6	0.5	49.3	0.3	0.6	2 555.2
2008						
March	69.0	*0.9	27.5	*0.3	0.2	3 526.4
June	72.2	0.3	12.9	3.6	1.7	3 715.8

VALUE OF WORK DONE DURING PERIOD

2005-06	251.9	3 443.5	219.9	4.2	12.2	10 793.7
2006-07	392.9	1 396.9	413.7	6.7	23.6	11 373.4
2007-08	450.5	5.0	151.4	5.9	3.1	11 295.5
2007						
March	99.9	1.1	94.5	1.3	13.9	2 602.5
June	124.8	2.3	107.4	3.6	*4.1	2 908.1
September	89.8	0.7	61.8	1.6	*0.2	2 260.6
December	99.9	1.1	49.3	0.3	0.5	2 627.4
2008						
March	95.8	^ 1.6	27.5	*0.3	0.2	3 012.9
June	165.0	1.6	12.9	3.7	2.1	3 394.6

VALUE OF WORK YET TO BE DONE

2005-06	53.5	2.0	0.3	—	0.1	1 675.1
2006-07	65.4	4.6	—	—	0.5	2 306.2
2007-08	275.3	3.5	—	0.1	0.7	4 062.2
2007						
March	^ 113.6	6.2	—	3.9	3.7	2 364.4
June	65.4	4.6	—	—	*0.5	2 306.2
September	225.4	4.6	—	0.9	**0.5	3 393.8
December	370.4	4.2	—	**0.1	0.1	3 405.6
2008						
March	355.5	4.5	—	**—	0.7	3 970.7
June	275.3	3.5	—	*0.1	0.7	4 062.2

^ estimate has a relative standard error of 10% to less than 25% and should be used with caution

* estimate has a relative standard error of 25% to 50% and should be used with caution

** estimate has a relative standard error greater than 50% and is considered too unreliable for general use

— nil or rounded to zero (including null cells)

	<i>Roads, highways and subdivisions</i>	<i>Bridges</i>	<i>Railways</i>	<i>Harbours</i>	<i>Water storage and supply</i>	<i>Sewerage and drainage</i>	<i>Electricity generation, transmission and distribution</i>	<i>Pipelines</i>
<i>Period</i>	\$m	\$m	\$m	\$m	\$m	\$m	\$m	\$m
VALUE OF WORK COMMENCED DURING PERIOD								
2005-06	5 604.3	897.8	1 128.8	168.2	939.6	822.8	3 445.3	324.7
2006-07	7 880.4	2 337.0	1 839.9	143.8	2 896.4	1 438.3	4 358.2	15.1
2007-08	8 960.2	792.4	1 564.3	1 958.3	4 757.6	2 223.3	5 137.7	17.5
2007								
March	^ 2 196.9	1 531.1	469.5	*28.2	^ 344.0	^ 195.7	1 258.2	^ 4.2
June	1 607.9	**416.6	586.6	*32.5	^ 755.7	^ 357.1	1 044.4	8.9
September	2 957.5	193.3	238.7	134.4	^ 1 019.2	458.6	972.5	^ 1.1
December	1 797.9	*85.6	218.0	^ 23.5	^ 2 287.4	*555.7	1 141.1	7.5
2008								
March	1 819.8	^ 306.6	315.4	1 361.6	^ 955.4	*579.1	1 310.6	3.3
June	2 385.1	*206.9	792.2	438.8	*495.6	^ 630.0	1 713.5	5.7
VALUE OF WORK DONE DURING PERIOD								
2005-06	5 115.2	479.9	1 750.4	140.8	912.3	868.9	3 609.4	115.2
2006-07	6 414.5	858.2	1 665.6	158.5	1 245.0	1 188.3	4 414.8	202.8
2007-08	7 482.3	1 109.8	1 462.9	492.0	3 945.9	1 762.6	4 933.1	39.6
2007								
March	1 739.2	350.1	415.4	30.3	297.9	^ 277.1	1 156.6	29.7
June	1 810.0	201.4	464.6	*49.6	481.1	401.9	1 188.2	28.8
September	1 568.2	246.6	374.5	26.3	710.0	^ 337.4	1 044.1	14.6
December	1 818.8	289.8	322.5	37.4	1 012.4	^ 417.2	1 135.7	16.0
2008								
March	1 808.1	264.6	338.2	251.9	1 112.8	^ 493.8	1 383.9	3.6
June	2 287.1	308.8	427.7	176.4	1 110.6	^ 514.1	1 369.3	5.3
VALUE OF WORK YET TO BE DONE								
2005-06	2 597.2	419.7	791.4	55.3	395.7	403.7	850.2	215.0
2006-07	4 048.6	1 701.0	918.5	14.8	2 439.2	665.3	915.4	26.5
2007-08	5 664.9	1 176.1	945.0	1 497.3	2 579.3	1 009.4	887.4	1.2
2007								
March	4 161.8	1 557.2	834.3	^ 32.1	1 807.9	688.7	739.3	46.3
June	4 048.6	^ 1 701.0	918.5	^ 14.8	2 439.2	665.3	915.4	26.5
September	5 501.7	^ 1 594.8	896.2	130.5	2 931.7	*1 091.7	604.2	13.1
December	5 177.0	1 170.1	835.0	126.9	4 167.9	^ 1 099.8	755.3	4.5
2008								
March	5 430.9	1 289.6	630.5	1 237.5	^ 4 183.9	*1 441.8	663.2	*0.8
June	5 664.9	1 176.1	945.0	1 497.3	2 579.3	^ 1 009.4	887.4	^ 1.2

^ estimate has a relative standard error of 10% to less than 25% and should be used with caution

* estimate has a relative standard error of 25% to 50% and should be used with caution

** estimate has a relative standard error greater than 50% and is considered too unreliable for general use

	Recreation	Telecom- munications	Oil, gas, coal and other minerals	Other heavy industry	Other	Total
Period	\$m	\$m	\$m	\$m	\$m	\$m
VALUE OF WORK COMMENCED DURING PERIOD						
2005-06	469.1	3 502.1	331.7	7.2	80.8	17 722.3
2006-07	682.4	1 434.8	425.3	14.7	119.4	23 585.7
2007-08	698.0	23.4	173.7	11.5	85.7	26 403.6
2007						
March	^ 158.1	**14.7	96.0	0.2	21.1	6 317.9
June	^ 151.3	^ 11.6	109.7	3.6	*31.5	5 117.3
September	^ 299.3	5.8	68.5	^ 4.1	**24.9	6 377.8
December	^ 159.8	^ 7.4	^ 62.5	*3.4	**4.8	6 354.5
2008						
March	^ 113.9	^ 6.2	28.7	*0.3	*22.9	6 823.7
June	^ 125.1	**4.1	14.0	3.6	*33.1	6 847.6
VALUE OF WORK DONE DURING PERIOD						
2005-06	424.3	3 501.3	257.7	5.2	93.4	17 274.1
2006-07	571.1	1 435.2	498.1	9.1	76.4	18 737.7
2007-08	653.9	29.1	162.3	13.1	63.1	22 149.6
2007						
March	^ 149.8	**16.0	117.7	2.5	19.9	4 602.1
June	166.4	^ 10.5	117.5	3.7	*33.2	4 956.9
September	137.1	6.3	65.6	^ 4.9	*12.5	4 548.2
December	151.4	^ 7.4	54.8	*3.6	*5.0	5 272.1
2008						
March	^ 157.2	^ 8.0	28.7	*0.9	*17.8	5 869.4
June	208.2	*7.4	13.2	3.7	*27.9	6 459.9
VALUE OF WORK YET TO BE DONE						
2005-06	59.6	14.9	74.6	—	5.1	5 882.4
2006-07	85.4	14.5	0.7	—	5.6	10 835.6
2007-08	285.1	31.3	1.0	0.1	12.5	14 090.6
2007						
March	^ 129.2	14.1	8.7	3.9	8.6	10 032.1
June	^ 85.4	14.5	0.7	**—	^ 5.6	10 835.6
September	241.2	13.3	3.5	1.3	*6.2	13 029.5
December	393.6	13.9	0.7	**1.5	*5.1	13 751.2
2008						
March	372.5	40.0	0.7	**0.5	*6.6	15 298.4
June	285.1	31.3	1.0	*0.1	*12.5	14 090.6

^ estimate has a relative standard error of 10% to less than 25% and should be used with caution

* estimate has a relative standard error of 25% to 50% and should be used with caution

** estimate has a relative standard error greater than 50% and is considered too unreliable for general use

— nil or rounded to zero (including null cells)

<i>Period</i>	<i>Roads, highways and subdivisions</i>	<i>Bridges, railways and harbours</i>	<i>Electricity generation, transmission etc. and pipelines</i>	<i>Water storage and supply, sewerage and drainage</i>	<i>Telecom- munications</i>	<i>Heavy industry</i>	<i>Recreation and other</i>	<i>Total</i>
<i>\$m</i>	<i>\$m</i>	<i>\$m</i>	<i>\$m</i>	<i>\$m</i>	<i>\$m</i>	<i>\$m</i>	<i>\$m</i>	<i>\$m</i>
VALUE OF WORK COMMENCED DURING PERIOD								
2005–06	2 725.0	1 589.0	1 912.9	911.8	1 633.4	622.1	687.5	10 081.7
2006–07	3 239.3	1 110.3	1 987.1	1 123.6	1 996.0	1 389.5	761.5	11 607.4
2007–08	4 192.1	2 034.3	3 135.4	3 263.7	1 461.5	1 864.2	694.7	16 646.0
2007								
March	882.1	311.2	556.4	^ 208.3	492.3	^ 286.3	^ 163.1	2 899.8
June	948.0	297.7	591.2	^ 170.6	717.1	665.1	^ 131.4	3 521.0
September	^ 1 593.2	253.3	822.9	^ 356.3	290.4	756.8	^ 177.2	4 250.1
December	^ 649.9	274.9	581.6	1 843.6	339.1	282.5	^ 174.3	4 145.9
2008								
March	^ 886.9	804.3	* 740.3	* 816.1	357.3	422.8	^ 165.6	4 193.3
June	1 061.9	701.8	990.7	^ 247.7	474.7	402.1	^ 177.6	4 056.7
VALUE OF WORK DONE DURING PERIOD								
2005–06	3 916.6	1 253.2	1 565.7	925.2	1 647.4	682.5	533.0	10 523.6
2006–07	2 859.9	1 273.0	2 090.8	1 086.2	1 974.5	954.1	586.6	10 825.1
2007–08	3 056.4	1 281.8	2 552.5	1 873.4	1 527.4	1 385.5	649.8	12 326.9
2007								
March	739.4	339.9	512.7	261.4	504.0	250.6	^ 148.7	2 756.7
June	720.4	371.9	644.6	344.6	705.9	245.8	^ 136.0	3 169.0
September	623.5	260.6	516.6	^ 252.4	296.5	249.6	^ 127.6	2 326.7
December	679.5	301.0	592.2	544.8	364.7	295.4	^ 160.0	2 937.5
2008								
March	836.4	326.7	603.9	^ 505.7	352.3	344.7	^ 178.2	3 147.9
June	917.2	393.5	839.8	570.5	513.9	495.8	^ 184.0	3 914.7
VALUE OF WORK YET TO BE DONE								
2005–06	925.9	682.8	544.7	345.9	103.8	252.8	39.3	2 895.3
2006–07	1 151.7	401.8	443.7	510.0	134.6	612.4	74.0	3 328.2
2007–08	1 923.5	1 212.3	1 373.9	1 634.8	94.2	969.5	190.2	7 398.4
2007								
March	1 008.8	493.3	475.7	^ 642.2	108.4	207.2	^ 98.7	3 034.4
June	1 151.7	401.8	443.7	^ 510.0	134.6	612.4	^ 74.0	3 328.2
September	2 101.6	395.6	783.8	^ 656.3	115.5	1 264.2	^ 136.2	5 453.1
December	^ 2 116.4	369.0	794.9	1 916.6	87.2	651.3	274.3	6 209.7
2008								
March	^ 2 250.7	926.7	^ 981.3	^ 2 470.1	115.3	1 079.8	253.6	8 077.5
June	1 923.5	1 212.3	1 373.9	1 634.8	94.2	969.5	190.2	7 398.4

^ estimate has a relative standard error of 10% to less than 25% and should be used with caution

* estimate has a relative standard error of 25% to 50% and should be used with caution

	<i>Roads, highways and subdivisions</i>	<i>Bridges, railways and harbours</i>	<i>Electricity generation, transmission etc. and pipelines</i>	<i>Water storage and supply, sewerage and drainage</i>	<i>Telecom- munications</i>	<i>Heavy industry</i>	<i>Recreation and other</i>	Total
<i>Period</i>	\$m	\$m	\$m	\$m	\$m	\$m	\$m	\$m
VALUE OF WORK COMMENCED DURING PERIOD								
2005-06	2 328.1	279.1	728.4	348.3	1 098.2	443.8	769.5	5 995.4
2006-07	2 084.1	231.8	1 193.1	575.6	945.6	605.1	799.9	6 435.2
2007-08	1 967.8	1 183.2	1 290.9	988.3	1 006.7	720.1	978.3	8 135.4
2007								
March	^ 352.9	^ 70.0	302.2	*98.0	182.3	^ 80.2	*175.6	1 261.2
June	522.0	84.8	222.4	232.9	301.1	^ 142.5	*216.6	1 722.4
September	^ 617.3	138.4	505.2	213.2	210.0	235.8	*319.1	2 239.0
December	331.6	**39.1	227.4	89.6	225.1	153.9	*213.0	1 279.5
2008								
March	^ 414.3	913.7	172.3	*413.0	231.0	^ 159.5	*231.6	2 535.4
June	^ 604.6	**92.0	386.0	^ 272.5	340.7	170.9	*214.7	2 081.5
VALUE OF WORK DONE DURING PERIOD								
2005-06	2 591.0	427.9	1 040.7	377.1	1 102.9	1 280.2	586.1	7 406.0
2006-07	3 345.4	286.8	941.5	370.3	960.7	814.8	496.9	7 216.5
2007-08	2 513.8	491.9	1 148.7	811.2	1 017.4	897.9	458.4	7 339.3
2007								
March	856.5	^ 64.1	220.2	^ 90.5	188.7	178.7	^ 126.5	1 725.2
June	841.7	^ 65.2	257.9	109.4	299.8	244.4	^ 125.4	1 943.8
September	649.7	^ 58.0	231.9	^ 212.8	209.5	231.6	^ 101.5	1 695.1
December	681.7	^ 58.7	278.9	^ 164.7	226.8	247.6	^ 102.0	1 760.5
2008								
March	581.9	249.5	299.6	^ 213.3	233.0	248.7	^ 118.6	1 944.7
June	600.4	125.7	338.3	^ 220.3	348.2	170.0	^ 136.3	1 939.0
VALUE OF WORK YET TO BE DONE								
2005-06	2 330.1	169.9	390.6	171.8	17.2	315.9	28.2	3 423.7
2006-07	1 132.9	108.1	612.0	355.2	9.2	194.0	190.2	2 601.5
2007-08	869.5	686.2	1 335.3	378.2	15.7	166.3	61.3	3 512.4
2007								
March	1 486.1	^ 85.7	688.8	^ 259.0	5.1	283.7	*48.0	2 856.5
June	1 132.9	108.1	612.0	355.2	9.2	194.0	**190.2	2 601.5
September	1 150.5	212.2	1 044.1	^ 461.2	11.1	223.9	**330.4	3 433.4
December	904.7	178.7	1 045.1	505.4	6.3	^ 217.0	**271.2	3 128.4
2008								
March	767.7	820.9	719.7	*718.4	13.0	^ 177.8	**284.9	3 502.4
June	869.5	686.2	1 335.3	378.2	15.7	166.3	^ 61.3	3 512.4

^ estimate has a relative standard error of 10% to less than 25% and should be used with caution

* estimate has a relative standard error of 25% to 50% and should be used with caution

** estimate has a relative standard error greater than 50% and is considered too unreliable for general use

<i>Period</i>	<i>Roads, highways and subdivisions</i>	<i>Bridges, railways and harbours</i>	<i>Electricity generation, transmission etc. and pipelines</i>	<i>Water storage and supply, sewerage and drainage</i>	<i>Telecom- munications</i>	<i>Heavy industry</i>	<i>Recreation and other</i>	<i>Total</i>
\$m	\$m	\$m	\$m	\$m	\$m	\$m	\$m	\$m
VALUE OF WORK COMMENCED DURING PERIOD								
2005-06	3 048.0	587.0	2 026.6	629.0	912.7	3 708.5	751.6	11 663.3
2006-07	5 147.4	3 030.7	2 646.5	2 945.7	905.7	3 961.2	626.6	19 263.6
2007-08	5 082.3	1 177.8	2 572.2	3 660.7	832.7	6 494.1	838.3	20 658.1
2007								
March	^ 718.9	1 650.2	^ 477.6	*285.7	179.8	1 735.8	^ 154.0	5 202.0
June	500.2	*703.5	1 279.7	^ 792.2	361.3	886.4	^ 189.4	4 712.6
September	988.4	173.4	414.6	^ 1 120.9	180.0	3 314.5	^ 215.0	6 406.8
December	^ 1 658.9	^ 125.5	498.6	*1 205.5	223.4	^ 845.6	^ 209.4	4 767.0
2008								
March	^ 1 252.5	^ 262.7	^ 540.1	*574.3	208.3	1 658.1	^ 213.5	4 709.6
June	^ 1 182.4	616.2	1 118.8	*760.0	221.0	^ 675.9	^ 200.3	4 774.7
VALUE OF WORK DONE								
2005-06	2 219.4	526.2	1 891.2	613.3	914.9	2 834.3	679.0	9 678.2
2006-07	3 169.2	929.5	2 141.7	1 188.1	906.4	4 006.7	605.1	12 946.8
2007-08	3 763.1	1 321.4	2 587.7	3 618.4	848.1	4 143.5	525.1	16 807.3
2007								
March	712.6	360.9	451.9	^ 277.8	181.7	1 043.4	^ 144.8	3 173.0
June	875.5	268.0	554.5	496.5	363.8	1 026.6	^ 186.8	3 771.6
September	822.1	341.8	557.3	^ 715.0	180.4	894.8	^ 142.5	3 653.9
December	955.1	337.4	553.4	^ 878.7	226.7	1 085.2	^ 128.6	4 165.1
2008								
March	853.5	290.0	557.5	^ 1 056.4	210.1	1 013.5	^ 140.7	4 121.7
June	1 132.4	352.2	919.5	^ 968.4	231.0	1 149.9	^ 113.3	4 866.7
VALUE OF WORK YET TO BE DONE								
2005-06	1 355.5	255.5	847.6	178.8	6.8	2 563.7	56.2	5 264.1
2006-07	3 321.5	2 160.5	1 415.2	2 219.2	7.7	2 703.2	48.8	11 876.1
2007-08	4 186.7	1 605.1	1 329.4	1 702.5	48.9	5 086.0	89.3	14 047.8
2007								
March	3 518.1	1 802.9	387.5	1 544.6	6.3	2 872.2	^ 39.7	10 171.2
June	3 321.5	^ 2 160.5	1 415.2	2 219.2	7.7	2 703.2	^ 48.8	11 876.1
September	3 644.9	1 977.0	^ 1 109.5	^ 3 069.0	6.7	4 403.6	*75.8	14 286.5
December	3 921.0	1 537.5	^ 1 057.4	^ 3 055.7	36.4	4 801.8	57.0	14 466.8
2008								
March	4 229.3	1 321.0	968.4	^ 2 556.0	42.1	5 437.2	^ 92.1	14 646.1
June	4 186.7	1 605.1	1 329.4	1 702.5	48.9	5 086.0	*89.3	14 047.8

^ estimate has a relative standard error of 10% to less than 25% and should be used with caution

* estimate has a relative standard error of 25% to 50% and should be used with caution

	Roads, highways and subdivisions	Bridges, railways and harbours	Electricity generation, transmission etc. and pipelines	Water storage and supply, sewerage and drainage	Telecom- munications	Heavy industry	Recreation and other	Total
Period	\$m	\$m	\$m	\$m	\$m	\$m	\$m	\$m
VALUE OF WORK COMMENCED DURING PERIOD								
2005-06	430.2	194.2	631.2	146.7	260.1	516.6	132.2	2 311.1
2006-07	561.5	183.1	785.8	104.9	263.1	1 311.9	145.2	3 355.6
2007-08	778.2	227.7	697.6	250.3	265.4	605.0	160.2	2 984.4
2007								
March	163.7	^ 30.3	212.5	^ 27.2	59.3	79.8	^ 34.2	607.0
June	158.9	47.6	^ 89.7	^ 24.7	63.2	^ 156.8	^ 49.1	590.0
September	189.9	142.7	^ 74.9	114.4	52.4	161.0	*44.2	779.4
December	^ 148.7	*31.3	235.2	24.9	73.5	167.1	*34.6	715.4
2008								
March	190.2	**20.8	78.0	**87.8	68.0	100.6	*29.2	^ 574.6
June	249.3	32.9	*309.6	*23.2	71.5	176.3	^ 52.2	^ 914.9
VALUE OF WORK DONE DURING PERIOD								
2005-06	434.4	139.5	417.6	126.9	258.1	320.1	131.4	1 827.9
2006-07	518.0	213.7	643.4	110.4	262.2	668.6	141.9	2 558.3
2007-08	747.6	184.8	475.9	179.7	262.4	604.9	146.7	2 602.1
2007								
March	126.1	41.9	197.9	^ 20.4	59.7	179.3	^ 29.8	655.2
June	164.2	56.5	174.2	28.8	63.3	186.2	^ 44.9	718.1
September	^ 145.4	39.9	111.5	^ 39.3	52.2	145.2	*27.1	560.7
December	^ 171.7	38.8	111.4	^ 37.2	72.9	159.9	*32.2	624.1
2008								
March	^ 180.7	47.7	104.5	*52.6	68.1	150.4	*39.7	643.7
June	249.8	^ 58.3	148.5	^ 50.6	69.2	149.5	^ 47.7	773.6
VALUE OF WORK YET TO BE DONE								
2005-06	39.1	86.0	411.8	32.9	6.5	199.7	7.5	783.4
2006-07	56.8	65.5	448.3	19.7	6.3	873.7	8.4	1 478.7
2007-08	150.1	124.5	192.0	19.3	40.9	812.4	26.4	1 365.5
2007								
March	67.6	69.9	540.4	16.2	6.3	914.6	6.1	1 621.1
June	^ 56.8	65.5	448.3	19.7	6.3	873.7	^ 8.4	1 478.7
September	^ 102.4	176.5	350.3	97.2	6.2	868.1	*11.2	1 611.8
December	72.6	176.1	420.7	102.8	6.7	830.4	*6.1	1 615.4
2008								
March	115.6	^ 161.0	388.7	101.6	8.1	788.9	10.7	1 574.6
June	^ 150.1	^ 124.5	192.0	^ 19.3	40.9	812.4	*26.4	1 365.5

^ estimate has a relative standard error of 10% to less than 25% and should be used with caution

* estimate has a relative standard error of 25% to 50% and should be used with caution

** estimate has a relative standard error greater than 50% and is considered too unreliable for general use

	<i>Roads, highways and subdivisions</i>	<i>Bridges, railways and harbours</i>	<i>Electricity generation, transmission etc. and pipelines</i>	<i>Water storage and supply, sewerage and drainage</i>	<i>Telecom- munications</i>	<i>Heavy industry</i>	<i>Recreation and other</i>	Total
<i>Period</i>	\$m	\$m	\$m	\$m	\$m	\$m	\$m	\$m
VALUE OF WORK COMMENCED DURING PERIOD								
2005–06	1 332.2	1 890.1	1 345.1	298.3	519.1	11 254.8	335.5	16 975.1
2006–07	2 039.9	2 229.6	2 709.5	362.0	566.8	7 010.6	426.1	15 344.3
2007–08	1 930.7	1 477.1	1 490.5	520.8	418.8	21 858.9	646.5	28 343.2
2007								
March	*854.6	1 469.2	645.9	66.3	100.4	2 109.8	*95.7	5 341.8
June	^ 317.5	69.4	612.6	145.2	226.9	^ 603.2	*99.3	2 074.0
September	^ 513.3	109.1	231.8	*83.6	85.5	12 321.9	*144.3	13 489.5
December	^ 414.4	70.3	^ 351.4	*167.2	130.3	2 721.5	^ 100.3	3 955.5
2008								
March	^ 501.1	846.8	616.7	*133.2	109.3	3 267.2	*165.3	5 639.5
June	^ 501.9	450.9	290.6	^ 136.9	93.6	^ 3 548.3	^ 236.5	5 258.7
VALUE OF WORK DONE DURING PERIOD								
2005–06	1 197.1	1 314.5	1 141.2	383.5	515.1	6 645.4	293.6	11 490.2
2006–07	1 582.1	1 985.5	2 378.0	346.1	515.8	9 024.7	394.8	16 227.1
2007–08	2 110.4	2 356.8	2 170.3	619.9	417.3	11 475.8	408.7	19 559.2
2007								
March	420.4	518.7	640.2	^ 82.0	98.8	2 224.6	^ 100.1	4 084.8
June	447.3	613.1	698.5	^ 84.9	187.4	2 403.4	^ 106.8	4 541.4
September	^ 399.9	595.2	646.3	^ 122.0	85.5	2 920.4	*80.4	4 849.8
December	534.2	699.8	399.9	^ 170.6	130.5	2 840.4	^ 79.0	4 854.3
2008								
March	^ 518.8	533.8	706.3	^ 140.2	111.2	2 866.5	^ 109.1	4 986.0
June	^ 657.5	528.0	417.8	^ 187.1	90.1	2 848.4	^ 140.1	4 869.1
VALUE OF WORK YET TO BE DONE								
2005–06	326.2	1 753.2	984.8	96.6	17.8	8 398.5	30.9	11 608.0
2006–07	750.6	2 309.7	1 338.1	149.3	53.7	8 120.5	30.9	12 752.8
2007–08	476.8	1 953.9	427.7	181.1	9.7	20 972.3	180.2	24 201.7
2007								
March	*957.4	2 754.6	1 451.3	^ 80.2	15.5	9 417.6	^ 67.1	14 743.7
June	750.6	2 309.7	1 338.1	149.3	53.7	8 120.5	^ 30.9	12 752.8
September	861.7	1 824.7	816.6	**216.8	36.3	18 354.6	^ 89.9	22 200.6
December	738.1	1 564.3	1 021.8	^ 160.6	8.2	18 553.9	126.9	22 173.8
2008								
March	645.9	1 910.8	527.7	*250.9	4.5	19 757.9	112.6	23 210.3
June	^ 476.8	1 953.9	427.7	181.1	9.7	20 972.3	180.2	24 201.7

^ estimate has a relative standard error of 10% to less than 25% and should be used with caution

* estimate has a relative standard error of 25% to 50% and should be used with caution

** estimate has a relative standard error greater than 50% and is considered too unreliable for general use

<i>Period</i>	<i>Roads, highways and subdivisions</i>	<i>Bridges, railways and harbours</i>	<i>Electricity generation, transmission etc. and pipelines</i>	<i>Water storage and supply, sewerage and drainage</i>	<i>Telecom- munications</i>	<i>Heavy industry</i>	<i>Recreation and other</i>	<i>Total</i>
<i>\$m</i>	<i>\$m</i>	<i>\$m</i>	<i>\$m</i>	<i>\$m</i>	<i>\$m</i>	<i>\$m</i>	<i>\$m</i>	<i>\$m</i>
VALUE OF WORK COMMENCED DURING PERIOD								
2005–06	144.9	17.6	431.7	100.3	72.7	36.5	30.9	834.5
2006–07	185.1	24.4	239.8	99.7	129.6	51.7	35.6	766.0
2007–08	190.1	35.4	327.3	69.1	154.4	81.3	50.8	908.4
2007								
March	^ 42.4	^ 4.1	81.1	^ 37.6	58.9	*18.4	*7.5	250.0
June	^ 44.5	^ 8.6	55.5	*33.1	47.5	6.2	*12.5	207.8
September	^ 33.9	*7.2	^ 50.5	^ 15.6	31.0	17.4	*14.3	169.9
December	^ 48.7	*10.8	^ 40.2	^ 18.8	43.7	45.1	^ 8.8	216.1
2008								
March	^ 74.4	^ 10.3	^ 53.9	^ 20.8	38.1	7.6	^ 12.7	217.8
June	^ 33.0	^ 7.2	182.7	^ 13.9	41.5	11.2	15.0	304.5
VALUE OF WORK DONE DURING PERIOD								
2005–06	154.4	14.3	471.9	74.7	71.5	35.4	31.9	854.1
2006–07	184.9	20.5	354.8	97.0	131.8	61.6	35.3	885.9
2007–08	181.1	37.2	253.0	74.2	155.9	93.2	42.5	837.2
2007								
March	^ 56.8	^ 3.9	103.7	^ 21.6	59.6	*19.2	^ 9.3	274.0
June	^ 58.1	^ 5.7	102.4	^ 39.5	49.0	21.6	^ 11.9	288.3
September	^ 27.7	*9.4	^ 51.0	^ 18.3	31.5	20.1	*4.5	162.5
December	^ 48.2	*9.9	49.6	^ 18.6	44.2	22.3	*10.4	203.2
2008								
March	^ 54.2	^ 5.6	^ 63.0	^ 17.8	38.0	29.3	^ 11.3	219.2
June	51.1	^ 12.2	89.4	^ 19.6	42.3	21.5	16.2	252.3
VALUE OF WORK YET TO BE DONE								
2005–06	18.0	4.1	146.6	29.4	—	9.0	3.3	210.5
2006–07	28.5	7.1	48.5	24.7	4.6	17.8	6.9	138.1
2007–08	25.1	5.2	114.7	20.6	2.5	32.2	5.8	206.2
2007								
March	^ 31.5	^ 6.2	92.9	42.4	6.0	16.9	*6.5	202.4
June	^ 28.5	7.1	48.5	^ 24.7	4.6	17.8	**6.9	138.1
September	^ 36.8	^ 6.3	47.0	28.2	4.0	75.8	*17.1	215.3
December	^ 34.9	^ 9.1	36.6	26.8	3.6	80.4	*13.3	204.7
2008								
March	^ 42.3	10.5	^ 24.9	25.5	3.7	43.5	*16.1	166.5
June	25.1	^ 5.2	114.7	20.6	2.5	32.2	*5.8	206.2

^ estimate has a relative standard error of 10% to less than 25% and should be used with caution

** estimate has a relative standard error greater than 50% and is considered too unreliable for general use

* estimate has a relative standard error of 25% to 50% and should be used with caution

— nil or rounded to zero (including null cells)

<i>Period</i>	<i>Roads, highways and subdivisions</i>	<i>Bridges, railways and harbours</i>	<i>Electricity generation, transmission etc. and pipelines</i>	<i>Water storage and supply, sewerage and drainage</i>	<i>Telecom- munications</i>	<i>Heavy industry</i>	<i>Recreation and other</i>	<i>Total</i>
<i>\$m</i>	<i>\$m</i>	<i>\$m</i>	<i>\$m</i>	<i>\$m</i>	<i>\$m</i>	<i>\$m</i>	<i>\$m</i>	<i>\$m</i>
VALUE OF WORK COMMENCED DURING PERIOD								
2005–06	87.7	11.3	41.3	21.6	86.6	105.8	29.7	384.0
2006–07	113.8	29.4	12.1	62.7	89.0	1 018.2	38.8	1 363.9
2007–08	164.3	161.1	272.5	30.0	140.1	1 314.7	62.7	2 145.4
2007								
March	15.5	*9.3	^ 2.5	*6.3	22.7	50.3	*11.6	118.2
June	29.0	*7.5	7.1	*17.8	31.4	49.3	10.5	152.6
September	73.4	*7.9	7.5	7.9	30.1	^ 108.6	12.3	247.8
December	^ 32.5	*2.0	12.1	**8.3	39.9	^ 60.7	^ 14.3	169.6
2008								
March	^ 28.1	**143.3	**234.8	9.9	35.4	*634.9	^ 15.3	*1 101.7
June	30.4	**7.9	18.1	3.9	34.6	510.5	^ 20.8	626.3
VALUE OF WORK DONE DURING PERIOD								
2005–06	95.6	51.2	30.1	21.0	85.2	1 562.6	30.4	1 876.1
2006–07	120.0	55.8	12.9	62.6	89.8	1 307.5	49.7	1 698.3
2007–08	136.6	59.9	71.5	67.8	139.6	748.1	56.0	1 279.5
2007								
March	19.8	^ 12.4	^ 2.7	^ 9.4	22.7	316.6	^ 11.1	394.6
June	^ 30.3	^ 14.8	7.4	^ 17.3	31.4	218.9	10.4	330.4
September	^ 44.5	^ 10.3	7.5	24.4	30.1	175.8	13.1	305.7
December	^ 37.0	*7.9	14.6	^ 16.9	39.5	96.8	^ 13.6	226.3
2008								
March	^ 25.9	**21.7	*9.5	**23.0	35.5	^ 164.5	^ 15.2	^ 295.3
June	29.2	*20.0	*39.9	3.4	34.6	311.0	14.1	452.2
VALUE OF WORK YET TO BE DONE								
2005–06	4.3	59.8	15.7	2.1	1.4	329.4	0.9	413.6
2006–07	4.4	31.4	2.9	30.9	0.1	248.4	0.2	318.3
2007–08	489.6	55.0	153.2	11.7	—	1 022.6	6.6	1 738.8
2007								
March	6.6	41.2	2.0	41.6	—	262.6	*0.8	354.8
June	4.4	31.4	2.9	30.9	0.1	248.4	*0.2	318.3
September	33.9	26.3	1.8	15.0	—	172.6	**0.6	250.2
December	31.3	21.6	9.1	14.1	0.6	120.0	3.4	200.1
2008								
March	25.1	**121.3	**223.5	*18.4	0.1	^ 884.5	1.5	^ 1 274.4
June	**489.6	*55.0	**153.2	11.7	—	^ 1 022.6	**6.6	^ 1 738.8
^ estimate has a relative standard error of 10% to less than 25% and should be used with caution * estimate has a relative standard error of 25% to 50% and should be used with caution ** estimate has a relative standard error greater than 50% and is considered too unreliable for general use — nil or rounded to zero (including null cells)								

<i>Period</i>	<i>Roads, highways and subdivisions</i>	<i>Bridges, railways and harbours</i>	<i>Electricity generation, transmission etc. and pipelines</i>	<i>Water storage and supply, sewerage and drainage</i>	<i>Telecom- munications</i>	<i>Heavy industry</i>	<i>Recreation and other</i>	<i>Total</i>
	\$m	\$m	\$m	\$m	\$m	\$m	\$m	\$m
VALUE OF WORK COMMENCED DURING PERIOD								
2005–06	124.4	14.5	41.3	25.4	112.2	1.5	25.6	344.9
2006–07	38.7	47.8	39.1	26.5	104.8	3.4	17.4	277.8
2007–08	78.7	16.1	89.6	101.8	65.5	0.7	48.9	401.2
2007								
March	^ 2.8	3.9	5.5	3.0	32.5	—	*3.4	51.1
June	^ 12.0	3.7	12.3	4.6	20.5	—	*8.2	61.4
September	20.2	4.6	25.8	16.4	14.0	0.3	*9.5	90.6
December	^ 5.9	3.7	9.3	29.3	16.0	—	**9.0	73.2
2008								
March	16.1	4.0	**22.7	30.9	19.6	0.2	*15.8	^ 109.3
June	^ 36.5	3.8	**31.8	25.1	15.9	0.2	*14.7	^ 128.0
VALUE OF WORK DONE DURING PERIOD								
2005–06	57.0	13.1	38.8	25.8	110.7	1.2	23.0	269.6
2006–07	76.4	25.0	38.9	26.6	104.7	3.2	16.0	290.9
2007–08	77.7	23.1	66.6	91.3	66.0	0.4	44.5	369.8
2007								
March	17.4	5.7	5.5	3.0	32.5	—	*3.3	67.4
June	17.1	6.7	12.3	4.7	20.4	—	*6.8	68.1
September	24.2	10.0	25.8	15.6	14.1	0.3	*8.8	98.9
December	8.9	5.1	9.3	29.2	16.2	—	*11.3	80.0
2008								
March	15.0	4.2	*14.0	27.3	20.0	0.1	*12.7	93.4
June	^ 29.5	3.8	*17.5	19.2	15.6	0.1	**11.7	^ 97.5
VALUE OF WORK YET TO BE DONE								
2005–06	66.4	—	1.8	0.2	—	0.1	1.5	70.0
2006–07	11.1	4.0	—	0.3	0.1	—	1.2	16.7
2007–08	16.3	—	1.8	7.3	1.9	0.1	5.5	33.0
2007								
March	16.9	10.7	—	0.1	—	—	—	27.8
June	11.1	4.0	—	*0.3	0.1	—	**1.2	16.7
September	7.9	8.0	—	**0.7	1.1	—	**1.3	19.0
December	^ 6.6	0.4	—	0.7	1.0	—	**1.5	^ 10.1
2008								
March	8.6	0.2	0.3	6.6	1.6	0.1	**2.4	19.8
June	16.3	—	1.8	7.3	1.9	0.1	^ 5.5	33.0

^ estimate has a relative standard error of 10% to less than 25% and should be used with caution

* estimate has a relative standard error of 25% to 50% and should be used with caution

** estimate has a relative standard error greater than 50% and is considered too unreliable for general use

— nil or rounded to zero (including null cells)

VALUE OF WORK DONE BY THE PRIVATE SECTOR, States and territories: Original

	NSW	Vic.	Qld	SA	WA	Tas.	NT	ACT	Aust.
Period	\$m	\$m	\$m	\$m	\$m	\$m	\$m	\$m	\$m
BY THE PRIVATE SECTOR FOR THE PRIVATE SECTOR									
2005-06	4 219.6	5 248.0	4 791.4	870.8	9 428.4	287.3	1 684.6	121.7	26 651.8
2006-07	4 623.6	5 123.4	6 701.9	1 619.6	13 671.6	431.4	1 582.1	157.7	33 911.2
2007-08	5 514.4	5 084.1	8 072.4	1 750.8	16 705.9	448.1	1 136.9	259.1	38 971.6
2007									
March	1 286.8	1 151.2	1 624.4	483.9	3 418.0	138.0	382.2	44.5	8 528.9
June	1 515.9	1 472.8	2 001.1	469.7	3 904.2	162.4	301.9	45.8	9 873.8
September	1 059.6	1 237.1	1 663.8	390.7	4 337.8	90.3	267.3	58.4	9 105.0
December	1 275.3	1 313.6	1 982.5	442.4	4 213.2	109.5	186.3	56.2	9 578.9
2008									
March	1 449.6	1 273.4	1 908.5	450.2	4 045.2	119.4	^ 264.9	71.3	9 582.5
June	1 729.9	1 260.0	2 517.5	467.5	4 109.6	128.9	418.5	^ 73.3	10 705.2
BY THE PRIVATE SECTOR FOR THE PUBLIC SECTOR									
2005-06	2 310.2	1 127.6	1 246.2	459.2	1 002.4	136.0	109.0	89.8	6 480.4
2006-07	2 039.8	1 470.3	2 211.9	388.7	933.9	136.5	75.0	108.2	7 364.3
2007-08	2 464.3	1 639.5	4 854.1	362.5	1 165.7	132.7	124.6	110.7	10 854.1
2007									
March	471.3	^ 481.9	672.9	83.8	214.9	41.8	^ 10.1	22.9	1 999.7
June	515.5	355.7	751.9	108.2	233.2	37.9	24.2	22.3	2 048.9
September	408.2	^ 400.6	1 068.8	71.4	^ 238.9	24.3	34.9	40.5	2 287.6
December	619.4	365.1	1 160.2	82.4	^ 325.4	^ 32.6	^ 35.6	23.9	2 644.7
2008									
March	676.3	412.2	1 318.3	^ 98.7	271.2	^ 31.5	* 26.3	22.1	2 856.6
June	760.4	^ 461.6	1 306.8	^ 110.0	^ 330.2	^ 44.2	^ 27.7	24.2	3 065.2
TOTAL BY THE PRIVATE SECTOR									
2005-06	6 529.8	6 375.6	6 037.5	1 329.9	10 430.8	423.3	1 793.6	211.6	33 132.1
2006-07	6 663.3	6 593.8	8 913.7	2 008.2	14 605.5	567.9	1 657.1	265.9	41 275.5
2007-08	7 978.8	6 723.6	12 926.5	2 113.3	17 871.6	580.8	1 261.5	369.8	49 825.7
2007									
March	1 758.1	1 633.1	2 297.3	567.7	3 632.9	179.8	392.3	67.4	10 528.6
June	2 031.4	1 828.6	2 753.0	577.9	4 137.4	200.3	326.1	68.1	11 922.7
September	1 467.8	1 637.7	2 732.6	462.2	4 576.7	114.6	302.2	98.9	11 392.6
December	1 894.7	1 678.7	3 142.7	524.8	4 538.7	142.2	221.9	80.0	12 223.7
2008									
March	2 125.9	1 685.6	3 226.8	548.9	4 316.4	150.9	^ 291.2	93.4	12 439.0
June	2 490.3	1 721.6	3 824.3	577.5	4 439.8	173.2	446.2	^ 97.5	13 770.5

^ estimate has a relative standard error of 10% to less than 25% and should be used with caution

* estimate has a relative standard error of 25% to 50% and should be used with caution

	NSW	Vic.	Qld	SA	WA	Tas.	NT	ACT	Aust.
Period	\$m	\$m	\$m	\$m	\$m	\$m	\$m	\$m	\$m
TOTAL BY COMMONWEALTH GOVERNMENT									
2005-06	1 094.4	743.3	781.6	184.5	434.9	68.0	72.0	58.1	3 436.8
2006-07	458.4	287.8	286.4	97.9	184.8	22.6	28.8	25.0	1 391.8
2007-08	—	—	1.3	—	0.3	0.5	—	—	2.1
2007									
March	—	—	—	—	—	—	—	—	—
June	—	—	—	—	—	—	—	—	—
September	—	—	0.4	—	0.1	—	—	—	0.5
December	—	—	0.7	—	—	0.2	—	—	0.9
2008									
March	—	—	0.1	—	0.2	0.2	—	—	0.5
June	—	—	0.1	—	—	0.1	—	—	0.2
TOTAL BY STATE AND TERRITORY GOVERNMENT									
2005-06	2 179.6	113.9	1 936.4	195.3	295.0	291.0	—	—	5 011.3
2006-07	2 624.3	74.1	2 500.5	284.0	978.9	204.9	—	—	6 666.7
2007-08	3 210.8	315.0	2 256.0	314.2	1 314.5	169.3	—	—	7 579.7
2007									
March	724.0	22.2	565.5	39.7	323.6	75.7	—	—	1 750.6
June	826.7	25.7	650.0	101.0	256.3	47.0	—	—	1 906.7
September	640.9	11.5	576.2	72.7	203.5	35.2	—	—	1 540.0
December	761.0	11.7	607.8	54.2	222.7	38.9	—	—	1 696.3
2008									
March	724.0	190.7	458.4	59.6	584.4	41.7	—	—	2 058.8
June	1 084.9	101.1	613.6	127.7	303.8	53.4	—	—	2 284.5
BY LOCAL GOVERNMENT AUTHORITIES									
2005-06	719.8	173.2	922.6	118.2	329.6	71.8	10.5	—	2 345.6
2006-07	1 079.1	260.9	1 246.1	168.2	457.9	90.5	12.4	—	3 315.0
2007-08	1 137.3	300.7	1 623.6	174.6	372.9	86.6	18.0	—	3 713.7
2007									
March	274.6	70.0	^ 310.3	^ 47.8	^ 128.3	^ 18.5	2.3	—	851.9
June	^ 310.9	89.6	368.7	39.1	^ 147.7	* 41.0	^ 4.3	—	1 001.4
September	^ 218.0	45.8	^ 344.7	25.9	^ 69.5	^ 12.7	^ 3.5	—	720.1
December	281.8	70.1	^ 413.9	^ 45.0	^ 92.9	^ 22.0	4.4	—	930.1
2008									
March	^ 298.0	68.4	^ 436.5	^ 35.2	85.0	^ 26.4	^ 4.2	—	953.6
June	^ 339.5	116.4	^ 428.6	^ 68.4	125.4	25.6	^ 6.0	—	1 109.9
TOTAL BY THE PUBLIC SECTOR									
2005-06	3 993.8	1 030.4	3 640.6	498.0	1 059.5	430.8	82.4	58.1	10 793.7
2006-07	4 161.8	622.8	4 033.0	550.0	1 621.6	318.0	41.2	25.0	11 373.4
2007-08	4 348.1	615.6	3 880.9	488.8	1 687.6	256.4	18.0	—	11 295.5
2007									
March	998.6	92.1	875.8	^ 87.5	451.9	94.2	2.3	—	2 602.5
June	1 137.6	115.3	1 018.6	140.1	404.0	^ 88.0	^ 4.3	—	2 908.1
September	858.9	57.4	921.3	98.5	273.1	47.9	^ 3.5	—	2 260.6
December	1 042.8	81.8	1 022.4	99.3	315.6	61.1	4.4	—	2 627.4
2008									
March	1 022.0	259.1	894.9	94.8	669.6	68.3	^ 4.2	—	3 012.9
June	1 424.4	217.4	1 042.3	196.2	429.2	79.1	^ 6.0	—	3 394.6

^ estimate has a relative standard error of 10% to less than 25% and should be used with caution

* estimate has a relative standard error of 25% to 50% and should be used with caution

— nil or rounded to zero (including null cells)

(a) Includes construction work done by public sector organisations with their own workforce only. All work contracted out by public sector organisations to the private sector appears in 'By private for public sector' totals.

VALUE OF WORK DONE FOR THE PUBLIC SECTOR(a), States and territories: **Original**

	NSW	Vic.	Qld	SA	WA	Tas.	NT	ACT	Aust.
Period	\$m	\$m	\$m	\$m	\$m	\$m	\$m	\$m	\$m
BY THE PRIVATE SECTOR FOR THE PUBLIC SECTOR									
2005-06	2 310.2	1 127.6	1 246.2	459.2	1 002.4	136.0	109.0	89.8	6 480.4
2006-07	2 039.8	1 470.3	2 211.9	388.7	933.9	136.5	75.0	108.2	7 364.3
2007-08	2 464.3	1 639.5	4 854.1	362.5	1 165.7	132.7	124.6	110.7	10 854.1
2007									
March	471.3	^ 481.9	672.9	83.8	214.9	41.8	^ 10.1	22.9	1 999.7
June	515.5	355.7	751.9	108.2	233.2	37.9	24.2	22.3	2 048.9
September	408.2	^ 400.6	1 068.8	71.4	^ 238.9	24.3	34.9	40.5	2 287.6
December	619.4	365.1	1 160.2	82.4	^ 325.4	^ 32.6	^ 35.6	23.9	2 644.7
2008									
March	676.3	412.2	1 318.3	^ 98.7	271.2	^ 31.5	* 26.3	22.1	2 856.6
June	760.4	^ 461.6	1 306.8	^ 110.0	^ 330.2	^ 44.2	^ 27.7	24.2	3 065.2
TOTAL BY THE PUBLIC SECTOR									
2005-06	3 993.8	1 030.4	3 640.6	498.0	1 059.5	430.8	82.4	58.1	10 793.7
2006-07	4 161.8	622.8	4 033.0	550.0	1 621.6	318.0	41.2	25.0	11 373.4
2007-08	4 348.1	615.6	3 880.9	488.8	1 687.6	256.4	18.0	—	11 295.5
2007									
March	998.6	92.1	875.8	^ 87.5	451.9	94.2	2.3	—	2 602.5
June	1 137.6	115.3	1 018.6	140.1	404.0	^ 88.0	^ 4.3	—	2 908.1
September	858.9	57.4	921.3	98.5	273.1	47.9	^ 3.5	—	2 260.6
December	1 042.8	81.8	1 022.4	99.3	315.6	61.1	4.4	—	2 627.4
2008									
March	1 022.0	259.1	894.9	94.8	669.6	68.3	^ 4.2	—	3 012.9
June	1 424.4	217.4	1 042.3	196.2	429.2	79.1	^ 6.0	—	3 394.6
TOTAL FOR THE PUBLIC SECTOR									
2005-06	6 304.0	2 158.0	4 886.8	957.2	2 061.9	566.9	191.5	147.9	17 274.1
2006-07	6 201.5	2 093.1	6 244.9	938.7	2 555.5	454.6	116.2	133.3	18 737.7
2007-08	6 812.4	2 255.2	8 735.0	851.3	2 853.3	389.1	142.6	110.7	22 149.6
2007									
March	1 469.9	574.0	1 548.7	171.3	666.8	136.0	12.4	22.9	4 602.1
June	1 653.1	471.0	1 770.5	248.4	637.2	125.9	28.5	22.3	4 956.9
September	1 267.1	458.0	1 990.1	169.9	512.0	72.2	38.3	40.5	4 548.2
December	1 662.2	446.9	2 182.6	181.7	641.1	93.7	^ 40.1	23.9	5 272.1
2008									
March	1 698.3	671.3	2 213.2	193.5	940.8	99.8	* 30.5	22.1	5 869.4
June	2 184.7	679.1	2 349.1	306.2	759.5	123.4	^ 33.7	24.2	6 459.9

^ estimate has a relative standard error of 10% to less than 25% and should be used with caution

* estimate has a relative standard error of 25% to 50% and should be used with caution

— nil or rounded to zero (including null cells)

(a) Excludes construction work done for the public sector where the asset will be owned by the private sector on completion of the project. See paragraph 10 of the Explanatory Notes for further information.

BY THE PRIVATE SECTOR

	<i>For the private sector</i>	<i>For the public sector</i>	<i>Total</i>	<i>By the public sector</i>	<i>Total for the public sector(a)</i>	<i>Total</i>
	%	%	%	%	%	%
VALUE OF WORK COMMENCED						
Roads, highways and subdivisions	15.2	5.9	8.0	3.9	4.0	6.2
Bridges	8.9	31.8	30.5	9.5	27.7	26.7
Railways	0.6	0.2	0.3	—	0.1	0.2
Harbours	5.2	37.6	9.9	—	4.4	3.5
Water storage and supply	15.0	22.8	15.9	57.9	29.9	23.8
Sewerage and drainage	22.3	9.6	11.4	59.6	24.8	19.5
Electricity generation, transmission and distribution	3.1	32.8	4.8	—	1.7	2.2
Pipelines	44.9	12.1	44.5	2.2	5.9	44.1
Recreation	13.6	33.5	13.0	7.5	14.8	11.4
Telecommunications	0.5	59.8	0.6	—	56.2	0.6
Oil, gas, coal and other minerals	1.9	10.5	1.9	—	0.9	1.9
Other heavy industry	68.3	—	68.3	0.8	0.8	67.9
Other	26.9	28.8	25.8	—	27.3	25.7
Total	4.6	5.0	3.8	7.4	4.6	3.4

VALUE OF WORK DONE

Roads, highways and subdivisions	7.0	4.6	4.6	2.8	2.8	3.4
Bridges	11.3	5.2	5.0	25.8	5.7	5.6
Railways	0.2	1.7	0.7	—	0.6	0.4
Harbours	3.9	15.3	4.7	1.9	7.5	3.9
Water storage and supply	15.0	5.9	5.4	16.0	5.8	5.4
Sewerage and drainage	17.0	14.8	14.2	18.8	11.8	11.4
Electricity generation, transmission and distribution	1.9	9.5	2.1	—	0.6	1.1
Pipelines	16.7	11.1	16.4	2.6	5.9	16.1
Recreation	10.8	25.8	10.6	2.4	5.7	7.2
Telecommunications	0.3	40.1	0.3	—	31.3	0.3
Oil, gas, coal and other minerals	1.1	32.8	1.1	—	0.9	1.1
Other heavy industry	6.4	—	6.4	0.7	0.7	6.3
Other	12.6	32.0	14.3	—	29.5	14.1
Total	1.3	3.4	1.5	2.4	2.0	1.3

VALUE OF WORK YET TO BE DONE

Roads, highways and subdivisions	12.5	4.3	5.2	30.9	6.8	6.1
Bridges	22.2	4.9	4.9	18.4	4.7	4.7
Railways	0.1	0.3	0.1	—	0.2	0.1
Harbours	3.9	0.3	2.3	0.3	0.2	1.3
Water storage and supply	15.1	2.0	2.1	12.5	2.8	2.7
Sewerage and drainage	49.6	17.5	23.8	11.4	13.8	19.5
Electricity generation, transmission and distribution	3.7	21.7	3.7	—	2.9	3.0
Pipelines	34.1	70.8	34.1	—	21.3	34.0
Recreation	28.7	42.5	26.6	5.2	5.2	7.5
Telecommunications	0.3	—	0.3	—	—	0.3
Oil, gas, coal and other minerals	0.4	—	0.4	—	—	0.4
Other heavy industry	34.4	—	34.4	32.3	32.3	34.4
Other	9.9	29.5	10.2	—	27.8	10.2
Total	1.2	2.7	1.2	8.5	3.1	1.3

— nil or rounded to zero (including null cells)

(a) Includes work done by the private sector for the public sector and work done by the public sector.

RELATIVE STANDARD ERRORS, States and territories—By type of work

	<i>Roads, highways and subdivisions</i>	<i>Bridges, railways and harbours</i>	<i>Electricity generation, transmission etc. and pipelines</i>	<i>Water storage and supply, sewerage and drainage</i>	<i>Telecom- munications</i>	<i>Heavy industry</i>	<i>Recreation and other</i>	Total
	%	%	%	%	%	%	%	%
VALUE OF WORK COMMENCED								
NSW	3.0	0.4	1.7	19.5	—	7.5	20.1	1.9
Vic.	11.6	55.3	2.9	15.3	—	2.6	44.2	6.2
Qld	16.6	4.3	5.7	38.5	—	14.1	24.4	7.8
SA	7.7	4.0	44.8	29.0	8.7	0.6	23.4	15.5
WA	18.1	4.3	2.5	22.9	3.2	11.9	11.6	8.5
Tas.	13.3	26.0	0.1	16.8	5.6	0.2	6.7	1.9
NT	8.7	51.6	—	—	—	3.3	24.7	2.9
ACT	12.5	—	68.7	0.4	1.2	—	30.9	17.8
Total	6.2	3.2	4.7	20.4	0.6	7.9	12.5	3.4
VALUE OF WORK DONE								
NSW	4.2	3.2	2.5	9.4	—	2.8	12.9	2.0
Vic.	9.1	8.3	1.6	15.1	—	1.4	14.5	3.5
Qld	5.9	2.4	2.1	10.2	—	3.3	19.0	2.7
SA	8.7	11.2	3.9	17.2	3.9	2.1	23.6	4.3
WA	12.2	2.7	0.7	13.4	2.5	0.9	13.2	2.5
Tas.	10.9	12.5	0.2	10.4	5.5	0.1	6.4	2.6
NT	9.4	30.6	48.9	—	—	9.2	9.6	7.8
ACT	15.7	—	28.5	0.6	1.2	—	91.6	13.1
Total	3.4	1.8	1.3	6.6	0.3	1.1	6.8	1.3
VALUE OF WORK YET TO BE DONE								
NSW	2.1	0.8	9.6	8.0	—	2.3	9.6	2.6
Vic.	6.1	3.7	1.3	5.6	—	—	22.9	1.9
Qld	8.5	3.0	4.3	9.1	0.1	1.1	26.0	2.9
SA	16.6	13.7	0.1	17.3	0.8	0.2	38.0	2.4
WA	17.7	0.2	1.7	7.2	4.9	1.1	5.7	1.0
Tas.	13.7	22.7	0.5	6.9	—	0.1	30.8	2.2
NT	67.2	42.5	84.3	—	—	10.8	63.3	21.6
ACT	—	—	—	—	—	—	11.1	1.9
Total	6.1	1.2	4.1	7.0	0.3	0.9	6.4	1.3

— nil or rounded to zero (including null cells)

EXPLANATORY NOTES

INTRODUCTION

1 This publication contains estimates of engineering construction activity in Australia by both public and private sector organisations. The estimates were compiled from the Engineering Construction Survey (ECS).

2 These estimates together with results from the Australian Bureau of Statistics (ABS) Building Activity Survey provide a complete quarterly picture of building and construction activity in Australia.

SCOPE AND COVERAGE

3 The ECS aims to measure the value of all engineering construction work undertaken in Australia. This value excludes the cost of land and repair and maintenance activity, as well as the value of any transfers of existing assets, the value of installed machinery and equipment not integral to the structure and the expenses for relocation of utility services. However, a contract for the installation of machinery and equipment which is an integral part of a construction project is included.

4 Where projects include elements of both building and engineering construction (for example, electricity generation, heavy industrial plant) every effort is taken to exclude the building component from these statistics.

5 From the September quarter 2002, engineering construction activity in the External Territories of Australia is included in these statistics. Jervis Bay is included in New South Wales, while Christmas Island and Cocos (Keeling) Islands are included in Western Australia.

STATISTICAL UNIT

6 In the Engineering Construction Survey, the statistical unit used to represent businesses, and for which statistics are reported, is the Australian Business Number (ABN) unit, in most cases. The ABN unit is the business unit which has registered for an ABN, and thus appears on the Australian Taxation Office (ATO) administered Australian Business Register. This unit is suitable for ABS statistical needs when the business is simple in structure. For more significant and diverse businesses where the ABN unit is not suitable for ABS statistical needs, the statistical unit used is the Type of Activity Unit (TAU). A TAU is comprised of one or more business entities, sub-entities or branches of a business entity within an Enterprise Group that can report production and employment data for similar economic activities. When a minimum set of data items is available, a TAU is created which covers all the operations within an industry subdivision (and the TAU is classified to the relevant subdivision of the *Australian and New Zealand Standard Industrial Classification (ANZSIC)*). Where a business cannot supply adequate data for each industry, a TAU is formed which contains activity in more than one industry subdivision and the TAU is classified to the predominant ANZSIC subdivision.

7 Further details about the ABS economic statistical units used in this survey, and in other ABS economic surveys (both sample surveys and censuses), can be found in Chapter 2 of the *Standard Economic Sector Classifications of Australia (SESCA) 2002* (cat. no. 1218.0).

RELATIONSHIP WITH NATIONAL ACCOUNTS

8 Data on the value of work done on the construction of new residential buildings, alterations and additions to residential buildings, private sector non-residential buildings (from *Building Activity, Australia* (cat. no. 8752.0)) and the value of engineering construction activity (from the Engineering Construction Survey) are the major source data which are used to compile the national accounts estimates for private gross fixed capital formation on dwellings, and other buildings and structures. However, there are some adjustments to the survey data which are made in the process of compiling these national account series. Allowances are made for the value of building activity which is out of scope of the Building Activity Survey and the Engineering Construction Survey. Such activity includes work done on projects which fall below the size cut-offs used for the Building Activity Survey and also the value of work done which is undertaken

EXPLANATORY NOTES *continued*

without obtaining a building permit, either because such a permit is not required or because the requisite permit is not obtained. The national accounts estimates also make allowances for purchases (less sales) of buildings and other structures from (to) the public sector.

SAMPLE REVISION

9 The survey frames and samples are revised each quarter to ensure that they remain representative of the survey population. The timing for creating each quarter's survey frame is consistent with that of other ABS surveys. This provides for greater consistency when comparing data across surveys.

CLASSIFICATION

10 *Ownership.* Projects are classified as *private sector* or *public sector* according to the expected ownership of the project at the time of completion. When a project is undertaken as a Private Public Partnership (PPP), or other similar arrangement, these projects will be classified according to the expected ownership of the asset at the time of completion. Projects undertaken as PPP's may be classified as private sector although ownership of the asset could eventually reside with the public sector.

11 *Sector.* The *public sector* includes Commonwealth Departments and Authorities, State Departments and Authorities, Local Government Authorities, Water, Sewerage and Electricity Authorities and government owned businesses and Statutory Authorities. All remaining organisations are classified as *private sector*. This publication contains separate estimates for the private sector and:

Commonwealth Government
State and Territory Government
Local Government.

12 *Type of construction.* A project is classified to a category of construction without regard to end use. For example, a project involving coal handling equipment at an electricity generating plant is included under 'Heavy industry - Oil, gas, coal and other minerals' and not under 'Electricity generation, transmission and distribution'. Where a project involves more than one category of construction the project is included under the category which accounts for the major part of the contract in terms of value.

RELIABILITY OF THE ESTIMATES

13 Since the estimates for private sector and public sector organisations are based on a sample of organisations they are subject to sampling error; that is, they may differ from the figures that would have been obtained if information for all organisations for the relevant period had been included in the survey. A measure of the likely difference is given by the relative standard error (RSE) of each estimate. There are about 2 chances in 3 that a sample estimate will differ by less than one standard error from the figure that would have been obtained if all units had been included, and about 19 chances in 20 that the difference will be less than 2 standard errors. Approximate RSEs of the estimates are shown in tables 24 and 25.

14 An example of the use of RSEs is as follows. If the total value of work done during the quarter is \$2,500m and the associated RSE is 0.5% then there are about 2 chances in 3 that the value which would have been obtained if there had been a complete collection would have been within the range \$2,488m to \$2,513m and about 19 chances in 20 that the value would have been within the range \$2,475m to \$2,525m.

15 Estimates that have an estimated relative standard error between 10% and 25% are annotated with the symbol '^'. These estimates should be used with caution as they are subject to sampling variability too high for some purposes. Estimates with an RSE between 25% and 50% are annotated with the symbol '*', indicating that the estimate should be used with caution as it is subject to sampling variability too high for most practical purposes. Estimates with an RSE greater than 50% are annotated with the symbol '**' indicating that the sampling variability causes the estimates to be considered too unreliable for general use.

EXPLANATORY NOTES *continued*

RELIABILITY OF THE ESTIMATES *continued*

16 The imprecision due to sampling variability, which is measured by the RSE, should not be confused with inaccuracies that may occur because of inadequacies in the source of information, imperfections in reporting by respondents, and errors made in the coding and processing of data. Inaccuracies of this kind are referred to as non-sampling error, and may occur in any enumeration whether it be a full count or only a sample. Every effort is made to reduce the non-sampling error to a minimum by the careful design of questionnaires, efforts to obtain responses for all selected organisations, and efficient operating procedures.

17 Caution is advised in respect of the value of work commenced (and consequently, the value of work yet to be done) reported by the public sector. It is known that data reported for value of work commenced are a combination of the following: annual works budget estimates which are reported as commencements in the September quarter (and in some cases may subsequently be undertaken by the private sector); genuine commencements as defined in the Glossary, and reported quarterly; commencements being reported as equal to the value of work done for the quarter; commencements of major stages in the case of long-term projects.

SEASONAL ADJUSTMENT

18 Since seasonally adjusted statistics reflect both irregular and trend movements, an upward or downward movement in a seasonally adjusted series does not necessarily indicate a change of trend. Particular care should therefore be taken in interpreting individual quarter to quarter movements.

19 From the June quarter 2003, the seasonally adjusted estimates are produced by the concurrent seasonal adjustment method which takes account of the latest available original estimates. The concurrent method improves the estimation of seasonal factors and, therefore, the seasonally adjusted and trend estimates for the current and previous quarters.

20 The revision properties of the seasonally adjusted and trend estimates have been improved by the use of autoregressive integrated moving average (ARIMA) modelling. ARIMA modelling relies on the characteristics of the series being analysed to project future period data. The ARIMA model is assessed as part of the annual reanalysis. For more information on the details of ARIMA modelling see feature article: *Use of ARIMA modelling to reduce revisions* in the October 2004 issue of Australian Economic Indicators (cat. no. 1350.0).

21 A more detailed review of concurrent seasonal factors will be conducted annually, generally prior to the release of data for the December quarter.

TREND ESTIMATES

22 Seasonally adjusted series can be smoothed to reduce the impact of the irregular component in the adjusted series. This smoothed seasonally adjusted series is called a trend estimate.

23 The trend estimates are derived by applying a 7-term Henderson moving average to the seasonally adjusted series. The 7-term Henderson average (like all Henderson averages) is symmetric but, as the end of a time series is approached, asymmetric forms of the average are applied. Unlike weights of the standard 7-term Henderson moving average, the weights employed here have been tailored to suit the particular characteristics of individual series.

24 While the smoothing technique described in paragraphs 21 and 22 enables trend estimates to be produced for recent quarters, it does result in revisions to the estimates for the most recent three quarters as additional observations become available. There may also be revisions because of changes in the original data and as a result of the re-estimation of the seasonal factors. For further information, see *Information Paper: A Guide to Interpreting Time Series—Monitoring Trends, 2003* (cat. no. 1349.0) or contact the Assistant Director, Time Series Analysis on Canberra (02) 6252 6540.

EXPLANATORY NOTES *continued*

CHAIN VOLUME MEASURES

25 Chain volume estimates of the value of work done are presented in original, seasonally adjusted and trend terms in tables 1, 2, 3 and 4.

26 While current price estimates of value of work done reflect both price and volume changes, chain volume estimates measure changes in value after the direct effects of price changes have been eliminated and therefore only reflect volume changes. The direct impact of the Goods and Service Tax is a price change, and hence is removed from chain volume estimates. The deflators used to revalue the current price estimates in this publication are derived from the same price data underlying the deflators compiled for the dwellings and new other building components, and the new engineering construction component, of the national accounts aggregate 'Gross fixed capital formation'.

27 The chain volume measures of work done appearing in this publication are annually reweighted chain Laspeyres indexes referenced to current price values in a chosen reference year. The reference year is updated annually in the September quarter publication. Each year's data in the value of work done series are based on the prices of the previous year, except for the quarters of the latest incomplete year which are based upon the current reference year. Comparability with previous years is achieved by linking (or chaining) the series together to form a continuous time series. Further information on the nature and concepts of chain volume measures is contained in the ABS *Information Paper: Introduction of Chain Volume Measures in the Australian National Accounts* (cat. no. 5248.0).

28 The factors used to seasonally adjust the chain volume measures are identical to those used to adjust the corresponding current price series.

ACKNOWLEDGMENT

29 ABS publications draw extensively on information provided freely by individuals, businesses, governments and other organisations. Their continued cooperation is very much appreciated: without it, the wide range of statistics published by the ABS would not be available. Information received by the ABS is treated in strict confidence as required by the *Census and Statistics Act 1905*.

RELATED PRODUCTS

30 Users may also wish to refer to the following publications:
Building Activity, Australia cat. no. 8752.0
Building Approvals, Australia cat. no. 8731.0
Construction Work Done, Australia, Preliminary cat. no. 8755.0
Dwelling Unit Commencements, Australia, Preliminary cat. no. 8750.0.

ABS DATA AVAILABLE ON REQUEST

31 As well as the statistics included in this and related publications, the ABS may have other relevant data available on request. Inquiries should be made to the National Information and Referral Service on 1300 135 070.

APPENDIX LIST OF ELECTRONIC TABLES

ELECTRONIC TABLES

The following tables are available electronically via the ABS web site. Not all series in the table go back to the earliest start date.

ENGINEERING CONSTRUCTION ACTIVITY

	<i>Publication table no.</i>	<i>Electronic table no.</i>	<i>Start date</i>
Value of work done, chain volume measures	1	1	September 1984
Value of work done, chain volume measures, change from previous period	2	n.a.	..
Value of work done, states and territories, chain volume measures	3	2	September 1986
Value of work done, states and territories, chain volume measures, change from previous period	4	n.a.	..
Value of work done	5	3	September 1986
Value of work done, change from previous period	6	n.a.	..
Value of work done, states and territories	7	4	September 1986
Value of work done, states and territories, change from previous period	8	n.a.	..
Activity, states and territories	9	5	September 1986
Activity, states and territories, change from previous period	10	n.a.	..
Activity, by type, Australia, original	11	6	September 1986
Work commenced by the private sector, by type, original	12	7	September 1986
Work done by the private sector, by type, original	13	8	September 1986
Work yet to be done by the private sector, by type, original	14	9	September 1986
Activity by the public sector, by type, original	15	10	September 1986
Activity for the public sector, by type, original	16	11	September 1986
Value of work commenced, by type and sector, New South Wales, original	17	12	September 1986
Value of work done, by type and sector, New South Wales, original	17	13	September 1986
Value of work yet to be done, by type and sector, New South Wales, original	17	14	September 1986
Value of work commenced, by type and sector, Victoria, original	18	15	September 1986
Value of work done, by type and sector, Victoria, original	18	16	September 1986
Value of work yet to be done, by type and sector, Victoria, original	18	17	September 1986
Value of work commenced, by type and sector, Queensland, original	19	18	September 1986
Value of work done, by type and sector, Queensland, original	19	19	September 1986
Value of work yet to be done, by type and sector, Queensland, original	19	20	September 1986
Value of work commenced, by type and sector, South Australia, original	20	21	September 1986
Value of work done, by type and sector, South Australia, original	20	22	September 1986
Value of work yet to be done, by type and sector, South Australia, original	20	23	September 1986
Value of work commenced, by type and sector, Western Australia, original	21	24	September 1986
Value of work done, by type and sector, Western Australia, original	21	25	September 1986
Value of work yet to be done, by type and sector, Western Australia, original	21	26	September 1986
Value of work commenced, by type and sector, Tasmania, original	22	27	September 1986
Value of work done, by type and sector, Tasmania, original	22	28	September 1986
Value of work yet to be done, by type and sector, Tasmania, original	22	29	September 1986
Value of work commenced, by type and sector, Northern Territory, original	23	30	September 1986
Value of work done, by type and sector, Northern Territory, original	23	31	September 1986
Value of work yet to be done, by type and sector, Northern Territory, original	23	32	September 1986
Value of work commenced, by type and sector, Australian Capital Territory, original	24	33	September 1986
Value of work done, by type and sector, Australian Capital Territory, original	24	34	September 1986
Value of work yet to be done, by type and sector, Australian Capital Territory, original	24	35	September 1986
Value of work done by the private sector, states and territories, original	25	36	September 1986
Value of work done by the public sector, states and territories, original	26	37	September 1986
Value of work done for the public sector, states and territories, original	27	38	September 1986

GLOSSARY

Bridges	Includes those for the support of roads, railways, causeways and elevated highways.
Electricity generation, transmission and distribution	Includes power stations; substations; hydro-electric generating plants; associated work i.e. towers; chimneys; transmission and distribution lines.
Harbours	Includes boat and yacht basins; breakwaters; retaining walls; docks and piers; terminals; wharves; dredging works; marinas.
Heavy industry	This category is the total of 'Oil, gas, coal and other minerals' and 'Other heavy industry'.
Oil, gas, coal and other minerals	Includes construction of production, storage and distribution facilities; refineries; pumping stations; construction of mines.
Other heavy industry	Includes construction of chemical plants; blast furnaces; steel mills; other industrial processing plants; ovens.
Pipelines	Includes oil and gas pipelines; urban supply mains for gas; pipelines for refined petroleum products, chemicals, foodstuffs, etc.
Railways	Includes tracklaying; overhead power lines and signals; platforms; tramways; tunnels for underground railways; fuel hoppers.
Recreation	Includes golf courses; playing fields; racecourses; stadiums; swimming pools; landscaping; park construction.
Roads, highways and subdivisions	Includes parking areas; cycle paths; airport runways; pedestrian and vehicle overpasses; traffic lights; roundabouts; associated road drainage works; street and highway lighting; road resurfacing, kerbing and guttering, road tunnels.
Sewerage and drainage	Includes sanitary and storm sewers; sewage treatment plants; stormwater drains; drainage systems.
Telecommunications	Includes mobile phone, radio, television, microwave and radar transmission towers; telephone lines and underground cables; coaxial cables.
Value of work commenced	<p>A project is regarded as having commenced when the site works begin, with the following exceptions:</p> <ul style="list-style-type: none"> ■ Some public sector authorities are unable to report on this basis. In such cases, the authorities report the value of their annual works budget in September quarter each year. ■ For very large projects, where a significant amount of work is done off-site, the project may be commenced before the site works begin.
Value of work done	The value of work done for the private sector consists of the value of work done on prime contracts, plus speculative contracts, plus work done on own account. The value of work done for the public sector is the work done by the organisation's own workforce and subcontractors.
Value of work yet to be done	The value of outstanding work for the project at the end of the period. Rise and fall and other cost variations can lead to increases or decreases in the value of work yet to be done.
Water storage and supply	Includes dams; weirs; reservoirs; embankments for water diversion; water pipelines; mains and treatment plants; flood prevention and erosion; aqueducts; water conduits; systems conveying water to residences, commercial and industrial establishments.

FOR MORE INFORMATION . . .

INTERNET

www.abs.gov.au the ABS website is the best place for data from our publications and information about the ABS.

INFORMATION AND REFERRAL SERVICE

Our consultants can help you access the full range of information published by the ABS that is available free of charge from our website. Information tailored to your needs can also be requested as a 'user pays' service. Specialists are on hand to help you with analytical or methodological advice.

PHONE

1300 135 070

EMAIL

client.services@abs.gov.au

FAX

1300 135 211

POST

Client Services, ABS, GPO Box 796, Sydney NSW 2001

FREE ACCESS TO STATISTICS

All statistics on the ABS website can be downloaded free of charge.

WEB ADDRESS

www.abs.gov.au